



2025

Transformational Institute

Student Handbook

POLICIES & PROCEDURES

1 Welcome

Thank you for choosing Transformational Institute, we look forward to working with you to achieve your training and career goals.

Transformational Institute is committed to providing high quality standards of vocational education and training, we aim to provide a happy, friendly atmosphere in which to learn.

Transformational Institute will ensure that you will receive the opportunity to fulfil your personal potential during your training and every endeavour will be made by staff to accommodate the training to meet your individual needs.

It is important to keep this handbook on hand during your training, as it will provide additional guidance as you progress throughout your training. In this handbook, you will find information about Transformational Institute's policies and procedures, together with forms and documents that you may need to refer to and/or complete.

If you have any suggestions on how we can improve our Policies and Procedures, please complete an "Opportunity for Improvement" form and submit to the RTO Manager.

We sincerely hope your time at Transformational Institute is a memorable and productive learning experience.

If you require any assistance with understanding these Policies and Procedures, please do not hesitate to ask your trainer for assistance, who can explain the process further.

Contact Details

Phone: 02 49697544

Email: christine@transformationalinstitute.com.au

Web: www.transformationalinstitute.com.au

Address: 1/55 Broadmeadow Rd Broadmeadow NSW 2292

RTO ID: 31269

1	Welcome	1
2	Code of Conduct (T&S)	4
3	Student Responsibilities	6
4	Enrolment Agreement Form	7
5	Enrolment and Selection	8
5.1	Support Services Process	8
5.2	Information Session	9
6	Course Fees, Payments, Refunds and Certification	9
6.1	Cooling Off Period	10
6.2	Payment Plan	10
7	Consumer Guarantee	11
7.1	What happens if this guarantee is not met?	11
8	Changes to Agreed Services	11
9	Training Product Transition	12
10	Training Evaluation Form	13
11	Language, Literacy and Numeracy (LLND)	13
11.1	LLND Assessment Process	13
11.2	Monitoring the Effectiveness of Services	14
12	Support Services	14
12.1	Support Services Form	15
12.2	Support Services List	16
12.3	Transformational Institute Contact Information	16
13	Principles of Assessment and the Rules of Evidence	16
13.1	Assessment Cover Sheet	18
14	Recognition of Prior Learning (RPL)	19
14.1	RPL Kit	20
15	Cheating and Plagiarism	20
15.1	Definition of Cheating	20
15.2	Definition of Plagiarism	20
15.3	Penalties	21
15.4	What if I don't agree with the decision?	21
15.5	Resources and Assessment Tools	21
16	Opportunity for Improvement	21
17	Certification	22
17.1	Competency based training	23
18	Credit Transfer	23
19	Unique Student Identifier	24
19.1	Do you need a USI?	24
19.2	Enrolment Process for USI	25
19.3	Security of the Student USI	25
19.4	USI Privacy Notice	25
19.5	Issuance of recognised qualifications or statements of attainment	23
20	Complaints Policy	26
20.1	Complaints Process	27

20.2	Complaints Flowchart	28
20.3	Complaints and Appeals Form	29
20.4	Complaints Report Form	29
20.5	Complaints and Appeals Register	29
21	Assessment Appeals Policy	30
21.1	Assessment Appeals Procedure	31
22	Fee Protection Policy	32
22.1	Threshold Prepaid Fee	27
23	Insurance	32
24	Legislative and Regulatory Requirements	32
24.1	Statutory Education Licence	32
24.2	Standards for Registered Training Organisations 2015	33
24.3	National Vocational Education and Training Regulator Act 2011	33
24.4	Australian Qualifications Framework (AQF)	34
24.5	Data Provision Requirements 2020 (T)	34
24.6	Privacy Protection Act 2012 & Privacy Act 1988	34
	<i>Australian Privacy Principle 1 – Open and transparent management of personal information</i>	34
	<i>Types of information which will be collected and where it is held</i>	35
	<i>How information is gathered</i>	35
	<i>Australian Privacy Principle 2 – Anonymity and Pseudonymity</i>	35
	<i>Australian Privacy Principle 3 – Collection of solicited personal information</i>	35
	<i>Personal information other than sensitive information</i>	35
	<i>Sensitive information</i>	35
	<i>Australian Privacy Principle 4 – Dealing with unsolicited personal information</i>	35
	<i>Australian Privacy Principle 5 – Notification of the collection of personal information</i>	36
	<i>Australian Privacy Principle 6 – Use or disclosure of personal information</i>	36
	<i>Australian Privacy Principle 7 – Direct marketing</i>	36
	<i>Australian Privacy Principle 8 – Cross border disclosure of personal information</i>	36
	<i>Australian Privacy Principle 9 – Adoption, use or disclosure of government related identifiers</i>	31
	<i>Australian Privacy Principle 10 – Quality of personal information</i>	36
	<i>Australian Privacy Principle 11 – Security of personal information</i>	37
	<i>Australian Privacy Principle 12 – Access to personal information</i>	37
	<i>Australian Privacy Principle 13 – Correction of information</i>	37
25.7	Media Consent and Usage Policy	37
26.7	Workplace Health and Safety Act 2011	37
	<i>WHS Incident Report</i>	37
	<i>Hazard Identification</i>	38
26.8	Emergency Procedures	39
	<i>Fire Emergency</i>	40
	<i>Evacuation Procedure (T&S)</i>	40
26.9	Anti-Discrimination Act 1977	40
26.10	Sexual Harassment Act 1984	41
26.11	Harassment Act 1997	42
26.12	Anti-Bullying	43
26.13	AFP National Police Check	44
26.14	Copyright Act 1968	44
26.15	Working with Children Check	44

2 Code of Conduct (T&S)

Transformational Institute is responsible for ensuring ongoing compliance with the Standards for Registered Training Organisations, including where services may be delivered on the RTO's behalf. The Chief Executive Officer is responsible for ensuring that the operations, staff and students of the RTO complies with the requirements of the VET Quality Framework, which includes the following:

- the Standards for Registered Training Organisations (RTOs) 2025
- the Australian Qualifications Framework
- the Fit and Proper Person Requirements 2023
- the Financial Viability Risk Assessment Requirements 2011
- the Data Provision Requirements 2020

Transformational Institute will ensure that compliance applies across all of its operations within the RTO's scope of registration, as listed on the National Register (<http://www.training.gov.au>).

Transformational Institute has policies and procedures in place for ensuring compliance with the VET Quality Framework, which are distributed to Staff and Students as part of their induction process, these policies and procedures include how the RTO will comply with the following:

Standards for Registered Training Organisations 2025

- Standard 1 – Training and Assessment

Training

Training is engaging and well-structured and enables VET students to attain skills and knowledge consistent with the training product.

Engagement with industry, employer and community representatives effectively informs the industry relevance of the training offered by NVR registered training organisations.

Assessment

The assessment system is fit-for-purpose and consistent with the training product.

The assessment system ensures assessment is conducted in a way that is fair and appropriate and enables accurate judgement of VET student competency

The assessment system is quality assured by appropriately skilled and credentialed people through a regular process of validating assessment practices and judgements.

The assessment system is quality assured by appropriately skilled and credentialed people through a regular process of validating assessment practices and judgements.

VET students with prior skills, knowledge and competencies are supported to seek recognition of prior learning to progress through the training product.

Credit Transfer

VET students who have previously completed an equivalent training product are supported to have their training recognised.

Facilities, resources and equipment for each training product are fit-for-purpose, safe, accessible and efficient.

- Standard 2 – VET Student Support

Information

Document Name:	Student Handbook	Created By:	RTO ADM
Version:	G2.2	Reviewed:	May 2025
Created Date:	09/12/2020	Approved By:	Christine Chittenden
Document Location:	https://docs.google.com/document/d/1k7Q37VKE6HrsL5f1X3z-oZNuJTn7YYPkvN14aFQlmaO8/edit		
		Review Date:	May 2026

VET students have access to clear and accurate information, concerning the organisation, the relevant training product, and the students are made aware of any changes that may effect them

VET students are advised, prior to enrolment, about the suitability of the training product for them, taking into account the students skills and competencies

Training Support

VET students have access to training support services, trainers and assessors and other staff to support their progress throughout the training product.

Reasonable adjustments are made to support VET students with disability to access and participate in training and assessment on an equal basis.

Diversity and Inclusion

The learning environment promotes and supports the diversity of VET students

Wellbeing

The wellbeing needs of the VET student cohort are identified and strategies are put in place to support these needs

Feedback, complaints and appeals

Effective feedback and complaints management addresses concerns and informs continuous improvement of the NVR registered training organisations.

Effective appeal processes are available to VET students where decisions of the NVR registered training organisation RTO or a third party adversely impact a VET student

- Standard 3 - Vet Workforce

Effective workforce if effectively managed to ensure appropriate staffing to deliver the services.

Trainer and assessors competencies

Training and assessment is delivered to VET students by credentialed people with current skills and knowledge in training and assessment

Training and assessment is delivered by people with current industry skills and knowledge relevant to the training product

- Standard 4 - Governance

Leadership and accountability

The NVR registered training organisation operates with integrity and maintains accountability for the delivery of quality services.

Roles and responsibilities of NVR registered training organisation staff and third parties are clearly defined and understood.

Risk Management

Any risks to VET students, staff and the organisation itself and the organisation are identified and managed.

Continuous improvement

An NVR registered training organisation undertakes systematic monitoring and evaluation of the organisation to support quality delivery and the continuous improvement of services.

Australian Qualifications Framework:

- Adhere to the requirements of the AQF Qualifications Issuance Policy
- Adhere to the requirements of the AQF Qualifications Pathways Policy

Fit and Proper Person Requirements

Document Name:	Student Handbook	Created By:	RTO ADM
Version:	G2.2	Reviewed:	May 2025
Created Date:	09/12/2020	Approved By:	Christine Chittenden
Document Location:	https://docs.google.com/document/d/1k7Q37VKE6HrsL5f1X3z-oZNuJTn7YPKvN14aFQLmAO8/edit		
		Review Date:	May 2026

- All senior management, or persons who would have a significant impact on the RTO, are required to complete and submit a Fit and Proper Person form to the National VET Regulator

Data Provision Requirements

- Collect and store student and training records within an AVETMISS compliant Student Management System (DPR 4)
- Collect data on behalf of the National VET Regulator against the AVETMISS requirements (DPR 4.1)
- Collect data on behalf of the National VET Regulator against the Quality Indicators (DPR 6)
- Submit annual reports to the National VET Regulator on data collected (DPR 7)

Working with Children Check

All Trainers and Assessors and student support staff are required to undertake a Working with Children Check prior to commencing training and assessment and support related to students under the age of 18 years.

Making the most of the training program

It is very important to make the most of your training opportunity. Please note it is your responsibility to do this. To optimize your own learning and successful completion, undertake to do the following:

- Attend the workshops and complete all required reading and learning activities
- Prepare well in advance of each workshop
- Be a willing participant
- Work with fellow learners
- Respect other people's opinions
- Ensure you have a clear understanding of the assessment requirements
- Take responsibility for the quality of evidence that you submit to the Assessor
- Keep track of your progress
- Complete and submit all assessment tasks using clear and concise language
- Be willing to contact your trainer if you do not understand the training activity or assessment task
- Maintain compliance with all Policies and Procedures

Getting help

At Transformational Institute your Trainers and Assessors are your best support. If you are in need of some support please speak to them. Transformational Institute can also arrange the following:

- Free study room with computers and internet access for all learners enrolled and engaged in training with us
- If you need any other support refer to Annexure A (Student and Staff Support Contact List)

3 Student Responsibilities

As a student with Transformational Institute, you are responsible for your own actions, this includes:

- Complying with the policies and procedures within the Student Handbook
- Participating in all training activities by asking questions and interacting with other students
- Communicating with the Trainer any struggles that you may be having, especially if it will affect your training and assessment.
- Thinking of the classroom as your workplace, and acting accordingly.
- Dressing appropriately for the classroom, as if you would dress for your workplace
- Challenge yourself in the classroom, you will have a better understanding of the training that was delivered
- Completing all assessment requirements required to determine your competency

- Cooperating with Trainers, Assessors, RTO Staff and Students
- Pay all course fees prior to course commencement
- Finding ways to relate to your reading and writing. What original thoughts and experiences can you bring to the course to make it come alive for yourself?
- Being in the training, participate, don't jeopardise your own learning by not participating
- Students are responsible for the security and integrity of their personal equipment brought onto institute premises for learning purposes. Transformational Institute is not liable for any loss, damage, or theft of such personal items. Students are encouraged to take appropriate measures to safeguard their belongings
- Surround yourself with other students who can help you. You don't have to be best friends with everyone you seek advice from, but find friends or acquaintances that will help you to be the best you can.

and:

Students are to meet their obligations aligned to:

- i) in relation to the repayment of any debt to be incurred under the VET Student Loan scheme arising from the provision of services;
- ii) comply with any requirements the RTO requires the learner to meet to enter and successfully complete their chosen training product; and
- iii) the supply of any materials and equipment that the learner must provide

4 Enrolment Agreement Form

All students are required to complete an prior to course commencement to ascertain contact details, such as: Unique Student Identifier, course of interest, emergency contact details, whether there is any recognition of prior learning and to collect the relevant statistical information required for AVETMISS reporting.

The back of the enrolment form outlines the Terms and Conditions of enrolment, including student's rights and responsibilities. Students are required to sign the back of the form to acknowledge their agreement with the RTO's terms and conditions.

A copy of the Enrolment Agreement Form will be supplied to the learner, in line with the Australian Consumer Law requirements, prior to course commencement.

The RTO Operations Manager is responsible for ensuring each student has completed an enrolment form prior to course commencement.

Following is a list of "Terms & Conditions of Enrolment" listed on the Enrolment Agreement Form:

- Enrolment and Selection (Clause 5.3)
- Consumer Guarantee (Clause 5.3)
- Course Fees, Payments and Refunds (Clause 5.3)
- Changes to Agreed services (Clause 5.4)
- Fee Protection (Clause 7.3)
- Consumer Guarantee (Clause 5.3)
- Cooling Off Period (Clause 5.3)
- Complaints and Appeals (Clause 6.1)
- Credit Transfer (Clause 3.5)

Document Name: Student Handbook

Version: G2.2

Created Date: 09/12/2020

Document Location: <https://docs.google.com/document/d/1k7Q37VKE6HrsL5f1X3z-oZNuJTn7YYPkvN14aFQlmaO8/edit>

Reviewed: May 2025

Created By: RTO ADM

Approved By: Christine Chittenden

Review Date: May 2026

- Language, Literacy and Numeracy (Clause 1.7)
- Support Services (Clause 1.7)
- Legislative and Regulatory Requirements (Clause 8.5)
- Workplace Health and Safety (Clause 8.5)

The Enrolment Agreement Form includes:

- Confirmation that the RTO is responsible for compliance of training and/or assessment
- Confirmation that the RTO is responsible for issuance of AQF certification documentation
- Details of the RTO complaints and appeals processes (also refer Clauses 6.1 – 6.4)
- The learner's rights if the RTO or third party closes or ceases to deliver the agreed training and/or assessment

Each student is required to complete an enrolment form prior to course commencement. The form is to be signed by the student stating that they agree with the RTO's policies and procedures, as outlined on the back of the enrolment form.

5 Enrolment and Selection

1. The student is responsible for notifying Transformational Institute if they have a medical condition or disability or require assistance in their training.
2. Fee for Service - A deposit must accompany enrolment to secure a placement within a course; this fee is also the Administration Fee.
3. It is the student's responsibility to note the date, time and location of the course as advertised.
4. Courses with low enrolments may be cancelled, every effort will be made to contact students, please ensure your contact details are correct.
5. Requests from the student to transfer or credit their course placement due to changed personal circumstances will be considered and every effort will be made to ensure a placement into an alternative course.
6. If you are unable to complete your course, due to changed personal circumstances, the RTO will make every effort to ensure you are placed into an alternative pre-scheduled course.
7. Students can only join after course commencement date if they meet all prerequisites. Full course fees are still payable for late enrolments.
8. The RTO reserves the right to decline admission to a course, terminate a student's enrolment in a class or change a Trainer/Assessor at any time without notice.
9. Students participate in courses involving physical activity; field trips, practical demonstrations etc. and do so at their own risk. The RTO's students are covered by public liability insurance whilst working within the RTO's premises.
10. If a student is identified as having a Disability and requiring further support, refer to the Support Services section in this manual.
11. Your enrollment is for **12 months**.

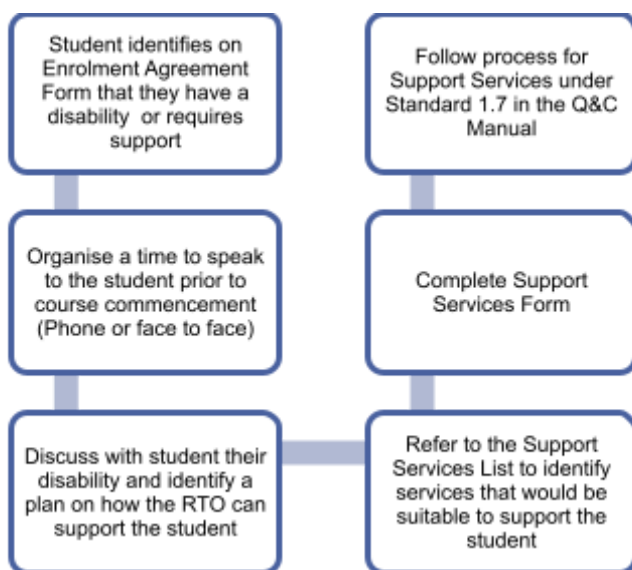
Learners are advised that when the expiry date is approaching, they have 4 weeks left to complete their studies. If your not completed by this time, then the student will be withdrawn from the course and issued a Statement of Attainment (SOA) for any completed units.

Where any student has a workplace component to complete their studies, and any practical observations are yet to be undertaken, this must be undertaken within the same 12 months time period as stated on their Enrolment Agreement.

No further evidence will be accepted once the 12 month date has expired, and the student has not provided any notification of any extension required.

Should a student decide to re-enrol, their enrolment will be classified as a Fee-For-Service client and all fees will apply for any units, observations or activities they elect to complete, including any administration costs to which the student will be given notice of prior to commencing the re enrolment.

5.1 Support Services Process



5.2 Information Session

An information session is mandatory for students to provide them with further information about the course to assist them with making an informed decision about enrolling into a course. The Information Session is only applicable for Full qualifications. This will include Language, literacy, numeracy and digital (LLND) skills assessment to ensure you are ready to start the course and if you may need additional support or assistance.

6 Course Fees, Payments, Refunds and Certification

1. Please refer to the course flyer for information on course fees, including any required deposit; administration fees; materials fees and any other charges (if applicable).
2. In line with the RTO's Fee Protection Policy the RTO will not collect more than \$1,500 prior to course commencement.
3. Certificates and Statements of Attainment are issued to students who are assessed as competent in the units successfully completed. The cost of the certificates is included in the course fees.
4. Refunds may be made in the following circumstances:
 - a) Participants have overpaid the administration charge
 - b) Participants enrolled in training that has been terminated by the RTO
 - c) Participant advises the RTO prior to course commencement that they are withdrawing from the course
 - d) If the participant withdraws from a course or program, prior to course commencement, due to illness or extreme hardship as determined by the RTO

Document Name: Student Handbook

Version: G2.2

Created Date: 09/12/2020

Document Location: <https://docs.google.com/document/d/1k7Q37VKE6HrsL5f1X3z-oZNuJTn7YYPkVn14aFQlmaO8/edit>

Created By: RTO ADM

Approved By: Christine Chittenden

Review Date: May 2026

Reviewed: May 2025

- e) In the event that the RTO fails to provide the agreed services
5. A deposit of no more than \$1,500 is required prior to course commencement; this deposit is to confirm a place in the course. Please refer to the Course Flyer for the deposit amount required.
 6. **(Fee for Service ONLY)** An **administration fee of \$250** is required to be paid prior to course commencement which is included within the deposit fee, but may be entitled to a refund of the remaining deposit. If the student withdraws from the course prior to course commencement, they will forfeit this administration fee. **If the total course fee is less than \$150**, then the total of the course is to be paid prior to course commencement to secure a place within the course.
 7. No refunds will be issued once the student has commenced the course
 8. Students are responsible for the safe storage of their Certificates and Statements of Attainment. If a student requires a reissue of their Certificate or Statement of Attainment, a **certificate re-issue fee of \$80** will be charged.
 9. **The RTO is responsible for issuance of AQF certification documentation within 30 calendar days of course completion.**
 10. If a student is deemed not yet competent on completion of training, they will be offered an opportunity to be reassessed. If a student is deemed not yet competent a second time, they will be given another opportunity for reassessment.
 11. If a student is required to be reassessed, they will be provided with further guidance from their trainer prior to reassessment.
 12. There will be no reassessment fee, unless stipulated on the course flyers. If a reassessment fee is applicable, this fee will be included on the course flyer.
 13. If a student is deemed not yet competent by the third attempt, they will be required to withdraw from the course
 14. If a student is deemed competent in some but not all the units of competencies required, a Statement of Attainment will be issued and the student will be given a six-month period to undertake reassessment if required.

6.1 Cooling Off Period

The RTO protects the rights of the learner including but limited to the Statutory requirements for cooling-off periods.

Students are eligible to cancel their enrolment by placing a formal notice of cancellation in writing to the RTO Manager (a letter or email is acceptable) within 10 business days of enrolment, unless the student has already commenced the training. Please refer to the Refund policy for process on acquiring a refund.

Payment Plan

For fees that are more than \$1,500, a payment plan will be offered on the course flyer.

A deposit to be paid prior to course commencement of up to \$1,500, this includes a non-refundable administration fee of \$150.

Progress Payment, to be paid following commencement, will be 50% of the remaining fees

Midway Payment, to be paid at the halfway point of the course, will be 25% of the remaining fees

Final Payment, to be paid prior to course completion, will be 25% of the remaining fees

We kindly ask all students making payments for their courses to please reference the payment with either their name or invoice number.

Government funded students - Fees and Charges

For student contribution fees, these are calculated by the State Government website and you are issued with a copy prior to enrolment.

Students who are enrolled in 'Training under Smart and Skilled' are fee-free and fully funded by the NSW and Commonwealth government, students are not required to pay any fees associated with the course delivery, administration services or non refundable deposits do not apply. There are no other charges.

7 Consumer Guarantee

Transformational Institute guarantees that the services provided by Transformational Institute will be:

- provided with due care and skill
- fit for any specified purpose (express or implied)
- provided within a reasonable time (when no timeframe is set for the training).

On the Enrolment Agreement Form the supply of services states when the services will be provided and the date they will be completed. If the Enrolment Agreement Form does not include the dates, i.e. for RPL or on the job training, the RTO guarantees to supply the service within a reasonable timeframe. What is 'reasonable' will depend on the nature of the training and other relevant factors such as the students' ability to complete the training and assessment.

7.1 What happens if this guarantee is not met?

In the first instance, the student should submit a complaint to the RTO identifying where the RTO has not met its requirements against the Consumer Guarantee, please refer to the Complaints and Appeals policy for how to submit a complaint. Transformational Institute will respond to the student as outlined in the Complaints and Appeals policy and procedures.

8 Changes to Agreed Services

Where there are any changes to the agreed services that will affect the learner, including in the event of Transformational Institute closing down, the RTO will advise the learner in writing within 10 business days of the event, this includes changes to any new third-party arrangements or a change of ownership or any changes to existing third party arrangements. Changes to Agreed Services Process.



9 Training Product Transition

Notification and Communication

The RTO will promptly inform students about the upcoming transition, explaining the implications of the change. Students will be informed about whether their current training product will be replaced, deleted, or updated.

Mapping and Review:

The RTO will review and map the old training product against the new one. This ensures that any learning outcomes already achieved by the student are recognized and credited in the new product where applicable. **Training and Assessment**

Adjustments:

All training and assessment materials, systems, tools, and processes will be reviewed and adjusted to align with the new training product. This process will be done in collaboration with the training and assessment staff to ensure accuracy and completeness.

Updating Documentation:

The Training and Assessment Strategy (TAS) will be updated to reflect the new requirements. All relevant documentation, including assessment materials, marketing information, and student records, will be updated with the correct codes, names, and titles of the new training product.

Student Transition:

During the 12-month transition period, the RTO will assess the progress of current students. Those who are unlikely to complete their training under the old product within the transition period will be transitioned to the new training product. If a student has completed all requirements before the end of the transition period, they will be issued a certification within

one year of the training product being superseded.

Certification and Completion:

Student who cannot complete their studies within the transition period will be transferred to the new training product. The RTO will ensure that all students complete their training and receive their certification within two years of the original qualifications being removed or deleted from the register.

Ongoing Support:

The RTO will provide continuous support to students throughout the transition to ensure they understand the changes and can complete their studies with minimal disruption.

Final Notification:

The RTO will ensure that all students and relevant parties, including employers if applicable, are aware of the transition's final dates and the importance of completing the training within the required timeframe. The organisation cannot issue a statement of attainment after the teach-out period expires, so students must complete their studies or transition within one year of the training product being superseded. This strategic transition plan ensures that students experience minimal disruption and are fully supported throughout the transition to the new training product.

10 Training Evaluation Form

The purpose of the Training Evaluation Form is to collect feedback from students on the delivery of training and assessment, including training facilities, the trainers' skills and knowledge, as well as feedback on the resources utilised for delivery of training, and overall satisfaction ranking with the course.

At the mid-way point and completion of each training program a Training Evaluation Form is to be handed out to the participants for completion. The Training Evaluation Forms are to be collected and the relevant trainer will prepare a summary of the evaluations to be given to the RTO Manager for reviewing at the monthly Quality and Compliance Meetings.

In addition to training evaluation, the RTO will conduct random surveys and interviews with industry leaders, clients, students and other community bodies to identify future needs in training.

The RTO Manager will report both positive and negative feedback to the relevant people for discussion. Feedback regarding delivered programs is to be discussed with the trainer that delivered the training with positive feedback being acknowledged. These discussions are to assist in the revision and adjustment of training material and delivery methods and enable trainers' professional development.

Any complaints or issues that are identified from feedback are to be recorded in an Opportunity for Improvement Form for action. Once action has been taken the Opportunity for Improvement Form is to be filed into the Opportunity for Improvement Register. Forms filed into the folder are reviewed at the monthly Quality and Compliance Meetings.

11 Language, Literacy and Numeracy (LLND)

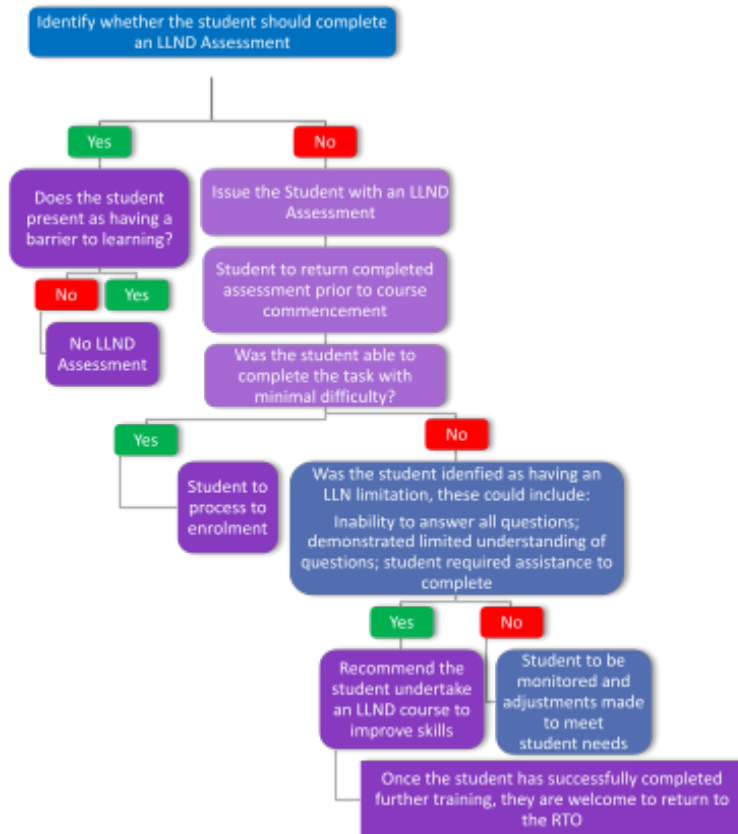
LLND support is available to provide students with advice and support services in the provision of language, literacy, numeracy and digital assessment services. Students needing assistance with their learning should be identified upon enrolment. Trainers and staff within the RTO can provide students with support to assist the student throughout the learning process.

Language, Literacy and Numeracy and Digital skills are generally included and identified in Training Products and accredited course programs. In identifying language, literacy and numeracy requirements, students are required to have basic skills in:

- Count, check and record accurately
- Read and interpret
- Estimate, calculate and measure

All students undertaking training are required to undertake an LLND Assessment,

11.1 LLND Assessment Process



11.2 Monitoring the Effectiveness of Services

Student progress will be monitored by the Assessor, in conjunction with the RTO Manager, to ensure that the students' needs are being met. The Trainer is required to report to the RTO Manager on student progress through the Trainers Report, which is submitted once a month to the RTO Manager.

Student attendance is recorded and monitored using electronic attendance tracker and/or paper-based attendance roll;

Student learning progress is assessed on completion of each period against DAP

Student enrolment report is run on regular basis to identify outstanding results and to identify students at risk

Students' academic support is identified, and an intervention plan is implemented for students at risk.

Student learning progress is discussed with the workplace supervisor/employer during the course of workplace visit or via email/telephone on regular basis for workplace-based training and assessment.

12 Support Services

The RTO caters to diverse client learning needs and aims to identify and respond to the learning needs of all students. All students are encouraged to express their views about their learning needs at all stages of their learning experience from the initial enrolment and induction stage.

The RTO is committed to providing students requiring additional support, advice or assistance while training. To achieve this and to ensure the quality delivery of training and assessment, the RTO provides support services to improve and extend training outcomes. Students are advised to make an appointment with their trainer in the first instance, if required the student can then schedule an appointment with the RTO Manager to discuss support services.

Additional support services include:

- Learning Support
- Assistance when applying for RPL or credit transfer
- Whether or not specialist support equipment or personnel is required
- Whether or not any reasonable adjustments need to be applied to suit the candidate context
- Briefings on the assessment process, may be written or verbal. If verbal, must be logged in writing
- Provision or access to assistive technology
- Additional tutorials to assist with learning
- Assistance in using technology
- Adjustment to equipment (i.e. change of study to support a student with a bad back)
- Referral to LLND assistance
- Mentoring
- Referral to counselling services
- Grievance /conflict resolution
- Stress Management
- Access and equity issues
- Client welfare and support
- Careers Pathways Advise

Genuine difficulties for a learner to complete a program in the allotted time frame are to be brought to the attention of the RTO manager at the first available opportunity.

12.1 Support Services Form

The Support Services Form is to be used by the RTO staff to record any counselling they may have undertaken with a student, including any discussion about providing extra support or referral to the Support Services List. This form is available from the office and can also be emailed to you upon request.

In this form you should include any of the following:

- Discussions raised by students that may be of a concern, this may have been during class or individually
- Referrals to other Support Services that may have been advised or discussed with the student
- Any discussion on disabilities that the student has disclosed, whereby they may need further assistance
- Discussions on any adjustments to training that may be required to meet student needs. You may also complete an Adjustment Plan following this meeting to identify a strategy to assist the student.

Document Name:	Student Handbook	Created By:	RTO ADM
Version:	G2.2	Reviewed:	May 2025
Created Date:	09/12/2020	Approved By:	Christine Chittenden
Document Location:	https://docs.google.com/document/d/1k7Q37VKE6HrsL5f1X3z-oZNuJTn7YYPKvN14aFQLmAO8/edit		
		Review Date:	May 2026

- Discussions on Language Literacy and Numeracy and referral to third parties

Upon completion of the Support Services Form the staff member should submit this form to the RTO Manager and arrange a time to discuss the student needs with the RTO Manager or other senior management.

All completed Support Services Forms will be discussed at the monthly Quality and Compliance Meeting to monitor student progress.

12.2 Support Services List

The Support Services List provides a list of support services available to students, please refer to the list to identify the most appropriate services. This list is provided on the back of the Student Handbook on page 42 and includes website addresses and phone numbers to access these services.

Support Support Services are available to both staff and students, Transformation Institute is committed to ensure that support service point of contact details are available to ensure the overall wellbeing of all stakeholders in the business either directly or indirectly by a third party. . A comprehensive listing is supplied via the following link:
<https://mhaustralia.org/need-help>

Any staff that feels they need support to access or engage with these service providers is encouraged to speak with their direct supervisor or a member of senior management who can offer support. If a student is unsure of the service that they require, they should contact their trainer or the RTO Manager to discuss further.

12.3 Transformational Institute Contact Information

Transformational Institute Contact Hours -

Office Hours are 9:00 AM to 5:00 PM

If you need to contact Transformational Institute outside of business hours, please:

Email: student.info@transformationalinstitute.com.au

Phone: 02 4969 7544

13 :Principles of Assessment and the Rules of Evidence

Assessors are responsible for ensuring that all assessments are conducted in accordance with the principles of assessment and the rules of evidence.

Principles of assessment are required to ensure quality outcomes. Assessments should be fair, flexible, valid and reliable as follows:

- Fairness:** Fairness requires consideration of the individual candidate's needs and characteristics, and any reasonable adjustments that need to be applied to take account of them. It requires clear communication between the assessor and the candidate to ensure that the candidate is fully informed about, understands, and is able to participate in the assessment process, and agrees that the process is appropriate. It also includes an opportunity for the person being assessed to challenge the result of the assessment and to be reassessed if necessary.
- Flexible:** To be flexible, assessment should reflect the candidate's needs; provide for recognition of competencies no matter how, where or when they have been acquired; draw on a range of methods appropriate to the context, competency and the candidate; and, support continuous competency development.
- Validity:** There are five major types of validity: face, content, criterion (i.e. predictive and concurrent), construct and consequential. In general, validity is concerned with the appropriateness of the inferences, use and consequences that result from the assessment. In simple terms, it is concerned with the extent to which an assessment decision about a candidate (e.g. competent/not yet competent, a grade and/or a mark), based on the evidence of performance by the candidate, is justified. It requires determining conditions that weaken the truthfulness of the decision, exploring alternative explanations for good or poor performance, and feeding them back into the assessment process to reduce errors when making inferences about competence.

Unlike reliability, validity is not simply a property of the assessment tool. As such, an assessment tool designed for a particular purpose and target group may not necessarily lead to valid interpretations of performance and assessment decisions if the tool was used for a different purpose and/or target group

Reliability: There are five types of reliability: internal consistency; parallel forms; split-half; inter-rater; and, intra-rater. In general, reliability is an estimate of how accurate or precise the task is as a measurement instrument. Reliability is concerned with how much error is included in the evidence.

Following is a guide to what should be in the assessment tools to meet the “Principles of Assessment”:

- Elements addressed (to levels as defined in performance criteria)
- Knowledge evidence/required knowledge addressed
- Performance evidence/required skills addressed
- Assessment conditions/critical aspects of evidence addressed
- Context and consistency of assessment addressed to appropriate AQF level
- Assessment of knowledge and skills is integrated with their practical application
- Assessment uses a range of assessment methods
- Criteria defining acceptable performance are outlined for all instruments
- Clear information about assessment requirements is provided (for assessors and students)
- Allows for reasonable adjustment and provides for objective feedback
- Considers dimensions of competency and transferability

Rules of evidence are closely related to the principles of assessment and provide guidance on the collection of evidence to ensure that it is valid, sufficient, authentic and current as follows:

Validity: Assessment evidence considered is directly relevant to the unit or module’s specifications.

Sufficiency: Sufficiency relates to the quality and quantity of evidence assessed. It requires collection of enough appropriate evidence to ensure that all aspects of competency have been satisfied and that competency can be demonstrated repeatedly. Supplementary sources of evidence may be necessary. The specific evidence requirements of each unit of competency provide advice on sufficiency.

Authenticity: To accept evidence as authentic, an assessor must be assured that the evidence presented for assessment is the candidate’s own work.

Currency: Currency relates to the age of the evidence presented by candidates to demonstrate that they are still competent. Competency requires demonstration of current performance, so the evidence must be from either the present or the very recent past.

Following is a guide to what should be in the assessment tools to meet the “Rules of Evidence”:

Validity	Assessment evidence considered has direct relevance to the unit or module’s specifications
Sufficiency	Sufficient assessment evidence is considered to substantiate a competency judgement
Authenticity	Assessment evidence gathered is the learner’s own work
Currency	Competency judgements include consideration of evidence from the present or the very recent past

In order to ensure that assessment activities/tasks meet the Principles of Assessment and the Rules of Evidence requirements, which includes meeting workplace requirements and to ensure the reliability and flexibility of assessment, all assessment activities/tasks must be validated.

13 Assessment Cover Sheet

The Assessment Cover Sheet is to be provided to the student to complete and attach to their completed Assessment Tasks prior to submission to their Assessor. The cover sheet provides a mechanism for the student to sign a declaration that the work submitted is “all their own work” and that they have kept a copy of their assessment task for their reference. The cover sheet also provides a mechanism for the assessor to provide feedback to the student as well as their result for work completed. A copy of the Assessment Cover Sheet is provided on the back of the Student Handbook.

14 Recognition of Prior Learning (RPL)

All students are eligible to apply for Recognition of Prior Learning and are advised of this on the back of the Enrolment Agreement Form and on the course flyer.

Recognition of Prior Learning is granted as a result of identifying and assessing previous and current informal education and training, work experience and/or life experience and knowledge. Previous learning and the evidence supplied is measured against predetermined performance standards contained within the Units of Competency.

To prepare for recognition of prior learning the student should indicate their decision to apply for recognition as soon as possible after the induction and orientation program. Following is the process for preparing for recognition of prior learning:

In consultation with the trainer/assessor the student should:

- Decide which units are to be recognised
- Provide an Evidence Portfolio in line with an agreed evidence plan. This must be set out in an organised easy to follow format according to the required evidence. If not it will not be accepted.
- Undertake peer assessment or third-party evidence
- Be prepared to 'show, tell and apply' skills and knowledge

Evidence for recognition of prior learning may include any of the following:

- Performance, demonstration, or skills test/assessment
- Workplace or other pertinent observation
- Oral presentation
- Portfolio, logbook, task book, projects or assignments
- Written presentation
- Interview and questions
- Simulations
- Video, photographic (endorsed) evidence
- Competency conversations (focusing on key points to look for in responses)

Students will initially be assessed against the performance criteria and critical aspects of evidence for each unit of competency within the Training Product.

RPL applicants must demonstrate their claim for competency in sufficient detail to enable the assessor to make clear judgements.

Students are required to sign an RPL Assessment Kit, which outlines the requirements of the evidence required for proof of competency. Assessors will develop an Assessment Plan to enable a portfolio to be developed.

The RTO will notify the student of any and all costs associated with the RPL process to be undertaken prior to the RPL being undertaken.

The cost will be 50% of the full qualification cost depending on which qualification is being assessed if the RPL is for the entire qualification.

14.1 RPL Kit

The RPL Kit is to be completed by students who wish to be given recognition for skills and knowledge that they may currently hold within a field or industry. The application process requires the student to provide evidence of, or demonstrate, their current ability to perform the requirements of each of the performance criteria within the unit of competency of a qualification.

Following is the process for applying for RPL using the RPL Kit:

- Student to contact the RTO and advise that they wish to apply for RPL using the RPL Kit
- RTO to supply the RPL Kit and explain the process for RPL
- RTO to allocate an Assessor to contact the student to ensure that they understand the requirements of the evidence to be supplied
- Student to submit to the Assessor all the required evidence and the completed RPL Kit
- Assessor to review the RPL Kit and determine whether the student has the required skills and knowledge against each Unit of Competency
- Students will be advised of the costs associated with the RPL process prior to the RPL process being undertaken.

Once the eligibility of the student has been determined by the Assessor, the kit is to be forwarded to the RTO for Certificate issue.

15 Cheating and Plagiarism

The Transformational Institute will not condone cheating or plagiarism in any form by students of the RTO and will ensure that these standards are upheld. Trainers must be diligent in reducing potential opportunities for cheating and plagiarism to occur by adhering to our policy on Cheating and Plagiarism.

15.1 Definition of Cheating

Cheating is defined as obtaining or attempting to obtain, or aiding another to obtain credit for work, or any improvement in evaluation of performance, by any dishonest or deceptive means. Cheating includes, but is not limited to: lying; copying from another's test or examination; discussion at any time of answers or questions on an examination or test, unless such discussion is specifically authorized by the instructor; taking or receiving copies of an exam without the permission of the instructor; using or displaying notes, "cheat sheets," using AI or other information devices inappropriate to the prescribed test conditions; allowing someone other than the officially enrolled student to represent same.

15.2 Definition of Plagiarism

Plagiarism is defined as the act of using the ideas or work of another person or persons as if they were one's own without giving proper credit to the source. Such an act is not plagiarism if it is ascertained that the ideas were arrived at through independent reasoning or logic or where the thought or idea is common knowledge. Acknowledgement of an original author or source must be made through appropriate references; i.e. quotation marks, footnotes, or commentary. Examples of plagiarism include, but are not limited to the following: the submission of a work, either in part or in whole completed by another; failure to give credit for ideas, statements, facts or conclusions which rightfully belong to another; failure to use quotation marks (or other means of setting apart, such as the use of indentation or a different font size) when quoting directly from another, whether it be a paragraph, a sentence, or even a part thereof; close and lengthy paraphrasing of another's writing without credit or originality; use of another's project or programs or part thereof without giving credit.

It is cheating to:

- use notes or other resources without permission during formal testing
- hand in someone else's work as your own (with or without that person's permission)
- hand in a completely duplicated assignment
- take work without the author's knowledge
- allow someone else to hand up your work as their own
- have several people write one computer program or exercise and hand up multiple copies, all represented (implicitly or explicitly) as individual work
- use any part of someone else's work without the proper acknowledgement
- steal an examination or solution from a Trainer/Assessor.
- Using AI without putting it into your own words

It is not cheating to:

- discuss assignments with your Trainer/Assessor or other students to understand what is being asked for
- hand in work done alone or with the help of staff
- get help to correct minor errors in spelling, grammar or syntax (sentence construction)
- discuss assignment requirements and course materials so that you can better understand the subject (this is, in fact, encouraged)
- submit one assignment from a group of students where this is explicitly permitted or required
- use other people's ideas where they are acknowledged in the appropriate way, such as referencing using footnotes, endnotes or the Harvard system of referencing.

15.3 Penalties

If you are suspected of cheating, your Trainer/Assessor will investigate to establish evidence to support the suspicion.

If there is evidence to support the suspicion, your Trainer/Assessor will notify the RTO Manager and set out the concerns to you in writing, requesting a time to discuss the matter. You will have the opportunity to counter the allegations made against you.

Once you have provided your information, Transformational Institute may come to one of two decisions:

Document Name:	Student Handbook	Created By:	RTO ADM
Version:	G2.2	Reviewed:	May 2025
Created Date:	09/12/2020	Approved By:	Christine Chittenden
Document Location:	https://docs.google.com/document/d/1k7Q37VKE6HrsL5f1X3z-oZNuJTn7YYPKvN14aFQLmAO8/edit		
		Review Date:	May 2026

- It is a minor or unintentional offence and you will need to undergo an alternative form of assessment, such as a short oral assessment, which may involve talking about the work or questioning. The penalty in this case is that you will receive the lowest level of competency or pass for all the learning outcomes being assessed.
- It is a serious offence and you will fail the module. Repeated offences of cheating – minor or serious – will result in failure of the module plus a record on your student file, together with the reason.

You will be advised of all penalties in writing.

15.4 What if I don't agree with the decision?

If you are accused of and penalised for cheating and believe that the accusation is unjust, you have the right to appeal against the charge. This appeal must be lodged in writing with the educational manager of the program within one week of the penalty being imposed.

The appeal may be lodged against:

- the process
- the decision
- the penalty.

The appeal will be investigated and a decision will be advised to you within a week of your appeal.

If you are having difficulties with your studies, you are encouraged to seek help from your Trainer/Assessor.

15.5 Resources and Assessment Tools

Students are prohibited from sharing assessment tools and learning resources with any third-party resource and assessment sharing platforms.

16 Opportunity for Improvement

A key process for managing continuous improvement throughout the RTO is through identifying “Opportunities for Improvement”, these can be improvements to Training and Assessment, Client Services or Management Systems. Examples of when Opportunities for Improvement may be identified include:

- Training and Assessment:
 - Reviewing a Training and Assessment Strategy
 - Feedback on Training and Assessment
 - Industry Consultation
 - Assessment Validation
 - Internal Audits
- Client Services:
 - Opportunities for Improvement
 - Training Evaluation Form
 - Enrolment Agreement Forms
 - Internal Audit Reports
 - Complaints and Appeals Forms

- Staff Management
 - Staff Grievance and Complaints
- Management Systems:
 - Quality and Compliance Meeting minutes
 - Review of Continuous Improvement Cycle
 - Conducting Annual Internal Audits

All staff and students are encouraged to complete an Opportunity for Improvement Form if they identify a system, process or procedure requiring implementation or improvement.

The implementation of the actions identified in the Opportunity for Improvement Form will be reviewed and discussed at the Monthly Quality and Compliance Meetings. Following is the process for opportunities for improvement:

1. An opportunity for improvement is identified
2. An Opportunity for Improvement Form is completed, by outlining the details of the current weakness in the system, process, procedure or practice.
3. In order to focus on the solution and not the weakness, the person who has identified the improvement is given the opportunity to also identify the “Action required for Improvement”. If they are not able to identify a solution, this will be given to the RTO Manager to resolve.
4. Submit the Opportunity for Improvement Form to the RTO Manager.
5. RTO Manager reviews the Opportunity for Improvement Form, and either reviews the suggested “Action required for Improvement” identified by the person who completed the form, or identifies what they believe the “Action required for Improvement”.
6. The RTO Manager enters the Opportunity for Improvement into the Opportunity for Improvement Register.
7. RTO Manager either then delegates the Opportunity for Improvement to be actioned by another staff member, or undertakes the Action to be completed.
8. Once Actioned and finalised, the Opportunity for Improvement Form is to be filed into the Opportunities for Improvement Register.
9. The Opportunity for Improvement is reviewed at the monthly Quality and Compliance Meeting. Minutes from the Quality and Compliance Meeting are distributed to all Training and Administration staff so that they can review the Opportunities identified.

17 Certification

In determining whether a student is competent/or not yet competent, the student is assessed against the requirements of the qualification, including the units of competencies and the performance criteria and assessment requirements within the units of competency.

17.1 Competency based training is a method of training that focuses on a learner’s ability to receive, respond to and process information in order to achieve competency. It is geared towards the attainment and demonstration of skills to meet industry-defined standards, rather than to a learner’s achievement relative to that of others. Learner progress in a competency-based program is not time-based. As soon as a learner achieves a required competency, they can move to the next. In this way, learners can complete training in their own time and at their own pace.

Students are issued with a VET Statement of Attainment or VET Qualification once competency has been achieved, as outlined within the Training Product. The Testamurs for all AQF qualifications issued will identify the qualification as an AQF qualification with the words “The qualification is recognised within the Australian Qualifications Framework”.

18 Access to Records

All student records, such as personal details and records of participation and progress (this includes data collected on the Enrolment Agreement Form and assessment results that are collected), are kept within a secure area (both electronic and hard files). An electronic record of each Student's enrolment and participation is kept on the Student Management System for a period of 30 years, this record is password protected and is only accessible by employees of the RTO.

All students have the right to access their record of participation and progress within a timely manner. In order for a student to access their records they are required to submit a request in writing to the RTO. If the student wishes to provide a third party with access to their records, they should state this in their formal request in writing.

The RTO will provide, within 48 hours of receiving the written request, a confirmation in writing that the RTO has received a request for Access to Records and confirmation of how long it will take for the access to be granted.

In no more than 5 business days the RTO will provide the student with access to their records as well as a Record of Results of the student's participation and progress.

19 Credit Transfer

AQF Certifications issued by other Registered Training Organisations (RTO) are recognised by Transformational Institute, this enables individuals to receive national recognition of their achievements.

In order to apply for a credit transfer, the student is required to complete the following steps:

1. Complete the "Credit Transfer Form"
2. Attach a certified copy of the authenticated VET transcript from the other RTO and highlight the units you wish to have applied to your current enrolment
3. Submit completed "Credit Transfer Form" and VET transcript to the RTO
4. Units are verified on www.usi.gov.au, only applicable if student completed the units after 1 January 2015
5. The **RTO** in consultation with relevant Assessor will review and confirm whether student is eligible for Credit Transfer (CT)
6. If the student is eligible, the result of CT should be applied to the unit within the Student Database
7. The **RTO** to advise the student in writing of the outcome of the credit transfer application:
 - a) Student is eligible for CT and the result has been entered into the Database
 - b) Student is not eligible for CT and the reason why

Authenticated copies are to be certified by a Justice of the Peace or someone within the RTO can sight the originals and authenticate a copy.

20 Unique Student Identifier

The Unique Student Identifier (USI) scheme, enabled by the *Student Identifiers Act 2014*, allows learners to access a single online record of their VET achievements. The scheme also allows for reliable confirmation of these achievements by employers and other RTOs.

Unless exempt, the RTO must only issue a qualification or statement of attainment to a learner after:

- The learner has provided the RTO with a verified USI, or
- The RTO has applied for a USI on the students' behalf.

A USI gives you access to your online USI account, which is made up of ten numbers and letters. It will look something like this: 3AW88YH9U5.

A USI account will contain all your nationally recognised training records and results from 1 January 2015 onwards. Your results from 2015 will be available in your USI account in 2016. When applying for a job or enrolling in further study, you will often need to provide your training records and results. One of the main benefits of the USI is that you will have easy access to your training records and results throughout your life. You can access your USI account online from a computer, tablet or smartphone anywhere and anytime.

20.1 Do you need a USI?

You will need a USI when you enrol or re-enrol in training from 1 January 2015 if you are a:

- student enrolling in nationally recognised training for the first time, for example if you are studying at TAFE or with a private training organisation, completing an apprenticeship or skill set, certificate or diploma course; or
- school student completing nationally recognised training; or
- student continuing with nationally recognised training.

You are a continuing student if you are a student who has already started your course in a previous year (and not yet completed it) and will continue studying after 1 January 2015.

Once you create your USI you will need to give your USI to each training organisation you study with so your training outcomes can be linked and you will be able to:

- view and update your details in your USI account;
- give your training organisation permission to view and/or update your USI account;
- give your training organisation “view access” to your Record of Results;
- control access to your Record of Results; and
- view online and download your training records and results in the form of a Record of Results which will help you with job applications and enrolment in further training.

If you are an international, overseas or an offshore student please visit usi.gov.au for more information.

While students may create their own USI, our RTO is also able to create USIs for our students. As a part of the enrolment process, we have included on the Enrolment Agreement Form a section for the student to provide their USI, if you do not have a USI in place, we can provide you with a USI Privacy Notice so that we can apply for a USI on the students’ behalf.

For more information, please refer to the following

<http://usi.gov.au/Training-Organisations/Documents/FactSheet-RTO-Student-Information-for-the-USI.pdf>, a copy of the USI Fact Sheet is also accessible from the RTO head office.

20.2 Enrolment Process for USI

1. All clients are to complete an Enrolment Agreement Form, which includes a section for the student to provide their USI.
2. RTO to verify the USI supplied by the student before visiting
3. If the student does not currently have a USI, the RTO can apply for a USI on their behalf, by providing the following forms of ID to the RTO:
 - Driver’s Licence
 - Medicare Card
 - Australian Passport
 - Visa (with Non-Australian Passport) for international students

Document Name:	Student Handbook	Created By:	RTO ADM
Version:	G2.2	Reviewed:	May 2025
Created Date:	09/12/2020	Approved By:	Christine Chittenden
Document Location:	https://docs.google.com/document/d/1k7Q37VKE6HrsL5f1X3z-oZNuJTn7YYPKvN14aFQlmaO8/edit		
		Review Date:	May 2026

- Birth Certificate (Australian)
 - Certificate of Registration by Descent
 - Citizenship Certificate
 - Immi Card (international students)
4. Completed enrolment forms are entered into the Student Management Database creating a client record within the database
 5. The client record will be retained within the Student Management System with all records of attainments in an accessible format for a period of thirty (30) years.
 6. Where a qualification or statement of attainment is recorded in the USI scheme, no additional records are required to be kept, as the records required will exist within the USI scheme.

20.3 Security of the Student USI

The RTO will ensure the security of USIs and all related documentation for verifying the student identity, all personal information collected solely for the purpose of applying for a USI on behalf of a student will be destroyed in a manner that will keep all personal information confidential, this includes digital and hard-copy of records.

The following process is in place for ensuring the security of a student's USI:

- Only authorised personnel will have access to a student's personal information, for both hard copy and electronic records.
- All student records, including evidence collected for verifying the students record, are stored in "locked" filing cabinets within the head office.
- Strong passwords on all network-connected computers are in place, which is only accessible by authorised personnel.
- Back-up copies of the database are automatic as the Database is cloud based.

20.4 USI Privacy Notice

All students who do not currently have a Unique Student Identifier (USI) in place, and want the RTO to apply for a USI on their behalf, will be issued with a USI Privacy Notice. The student will be required to sign this form prior to the RTO setting up the students USI.

20.5 Issuance of recognised qualifications or statements of attainment

Once a USI has been collected and stored into the RTO's database, and on successful completion of training, the RTO will provide nationally recognised qualifications or statement of attainments to students in a variety of different formats.

Below are some examples that are considered a statement of attainment and they cannot be issued until the student has supplied the RTO with a USI that has been verified. They can include:

- A certificate
- A building industry white card
- A stamp on their license to certify they can now drive heavy machinery

When a student logs into their USI account it will link to the national data collection using the USI. The student's USI account will then be able to see their records and results completed. The student's results from 2015 will be available in their USI accounts in 2016.

21 Complaints Policy

Staff and students have the right to submit a complaint if they wish to express discontent against another person or a complaint against the RTOs process or system. In order to ensure that complaints are dealt with in a timely manner, we have implemented a complaints process.

For extensive information on Complaints and Appeals, students are encouraged to request a copy of the Students Complaints and Appeals Policy and Procedure from their trainer or any administration staff member.

This policy and procedure is relevant to all grievances arising in the following areas:

- a) Student wishes to raise a complaint against another student
- b) Student wishes to raise a complaint against the RTO
- c) Student wishes to raise a complaint about a Third Party
- d) RTO staff wishes to raise complaint about a Third Party
- e) Staff wishes to raise a complaint about another staff member or a student
- f) ***Staff and students are advised to request a copy of the relevant Policy and Procedures***

21.1 Complaints Process

If a student, trainer or staff member is experiencing any difficulties, they are encouraged to discuss their concerns with Senior Management. RTO administrative staff will make themselves available at a mutually convenient time if a student wishes to seek assistance.

If a Student or Staff member wishes to make a formal complaint they are required to complete a Complaints and Appeals Form, which is included in the Student and Trainers Handbook. Once the form has been completed, the form should be submitted to the **RTO manager** for actioning.

If required, the student has the right to have a third party/support person assist them through the Complaints Process, this may be due to language barriers or simply at the students' request.

Following is the process for managing complaints, beyond the general overview:

1. Formal complaint is received by the complainant to the RTO
2. If not already submitted with the complaint, a *Complaints and Appeals Form* is completed and submitted to the RTO Manager
3. A written acknowledgement of receipt of the *Complaints and Appeals Form* will be forwarded to the complainant following receipt by the RTO Manager within 5 business days
4. The Complaint is discussed with all parties involved in the grievance, in order to find a solution agreeable to all parties
5. Grievances should be kept confidential, in order to protect the complainants
6. All *Complaints and Appeals Form* are to be reviewed at the monthly Quality and Compliance Meetings.
7. The RTO Manager is to follow the process on the *Complaints and Appeals Form* for the process under "Recommended Action Required for Improvement".
 - a. An initial meeting is to be held within 10 business days
 - b. If further investigation is required, this should be completed within 60 calendar days
8. Each appellant:

- a. Has an opportunity to formally present his or her case
 - b. Is given a written statement of the complaint outcomes, including reasons for the decision
9. If a solution cannot be found the matter is brought before senior management for resolution, agreeable to all parties.
10. If Senior Management is party to the grievance, they will not take part in any discussions or decisions made and the matter will be referred to the CEO.
11. If a solution has not been reached to the benefit of all parties the complainant has the right to request a review by an independent party, who is not part of the RTO
12. The RTO is responsible for acting upon the subject of any complaint found to be substantiated.
13. Complaints and Appeals Forms received are to be entered onto the Complaints and Appeals Register
14. If the RTO determines that the complaint process cannot be finalised within 60 calendar days the RTO Manager will:
 - a. Confirm this in writing to the complainant, including reasons why more than 60 calendar days is required
 - b. Will regularly update the complainant or appellant on the progress of the matter

Complaints and Appeals Forms are to be actioned by the appropriate staff member and filed into the *Complaints and Appeals Register* and a scanned copy saved onto the student file in the database.

All *Complaints and Appeals Forms* are to be reviewed during the monthly Quality and Compliance Meetings and improvements are to be identified and implemented according to the Policies and Procedures of the RTO.

Where the complaint or review extends beyond remediation being sought and finalised, the Transformational Institute will seek advice from an appropriate party independent of the RTO and the complainant or appellant, at the request of the individual making the complaint or appeal.

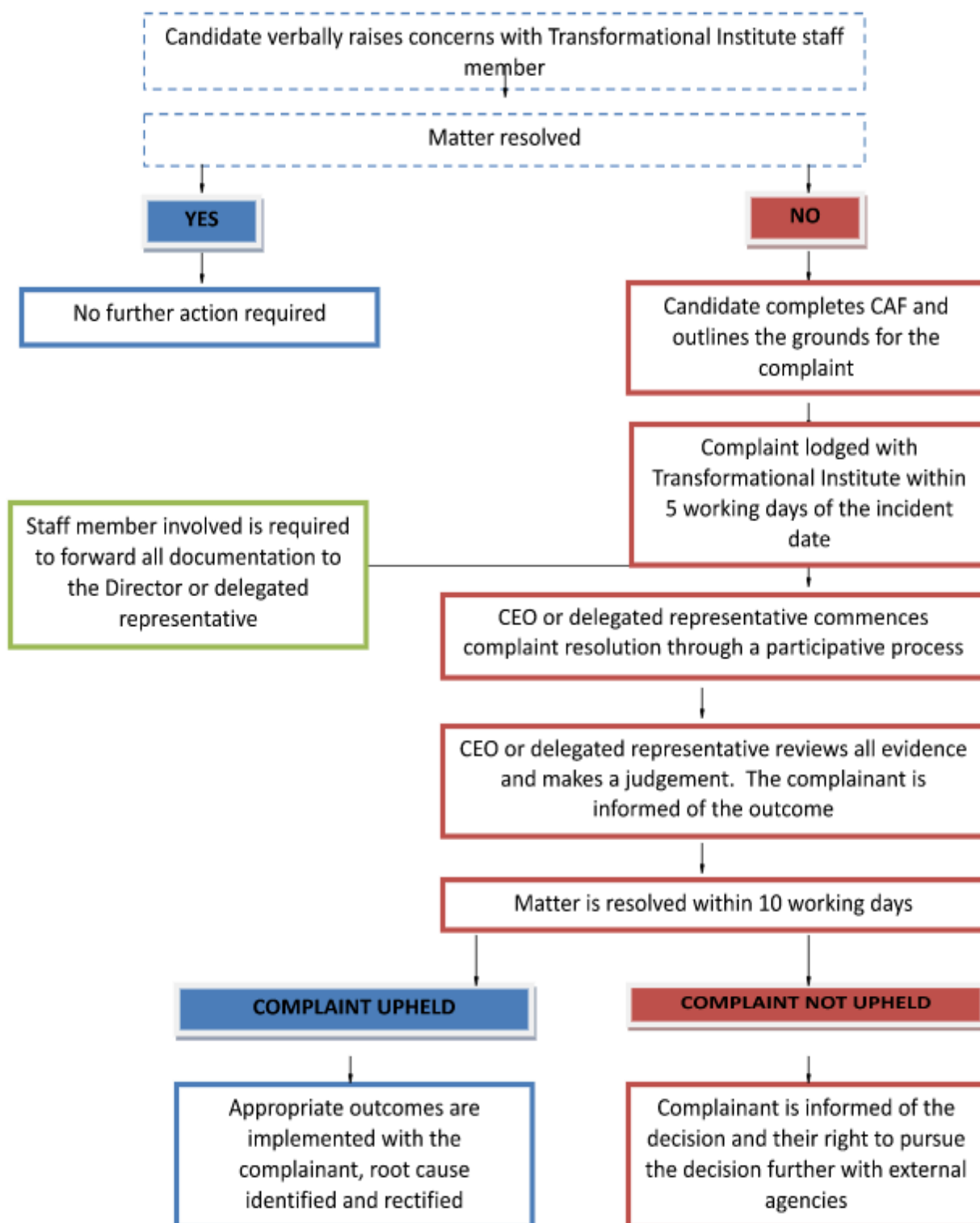
Should the internal process be unsatisfactory, you can lodge a complaint to the:

- National Training Complaints Hotline (<https://www.dewr.gov.au/national-training-complaints-hotline>)
Phone: 13 38 73, Monday–Friday, 8am to 6pm nationally.
Email Complaints: NTCH@dewr.gov.au
- Office of Fair Trading (<http://www.fairtrading.nsw.gov.au>).
- Australian Skills Quality Authority (<http://www.asqa.gov.au>)
- Consumer and Business Services SA (<http://www.cbs.sa.gov.au/wcm/>)

There is no cost involved with lodging a complaint with Transformational Institute.

21.2 Complaints Flowchart (General overview)

Complaints Process



21.3 Complaints and Appeals Form

The Complaints and Appeals Form can be obtained from the RTO.

21.4 Complaints Report Form

The Complaints Report Form is to be used if there is not enough room on the Complaint and Appeals Form to describe the complaint. This form is to be attached and submitted with the *Complaints and Appeals Form*.

21.5 Complaints and Appeals Register

The RTO has in place a register for filing completed Complaints and Appeals forms. When a complaint or appeal is received, the form collected is to be entered into the Complaints and Appeals Register and given a register number.

Complaints and Appeals that are placed into the register are reviewed and monitored each month at the monthly Quality & Compliance Meeting.

22 Assessment Appeals Policy

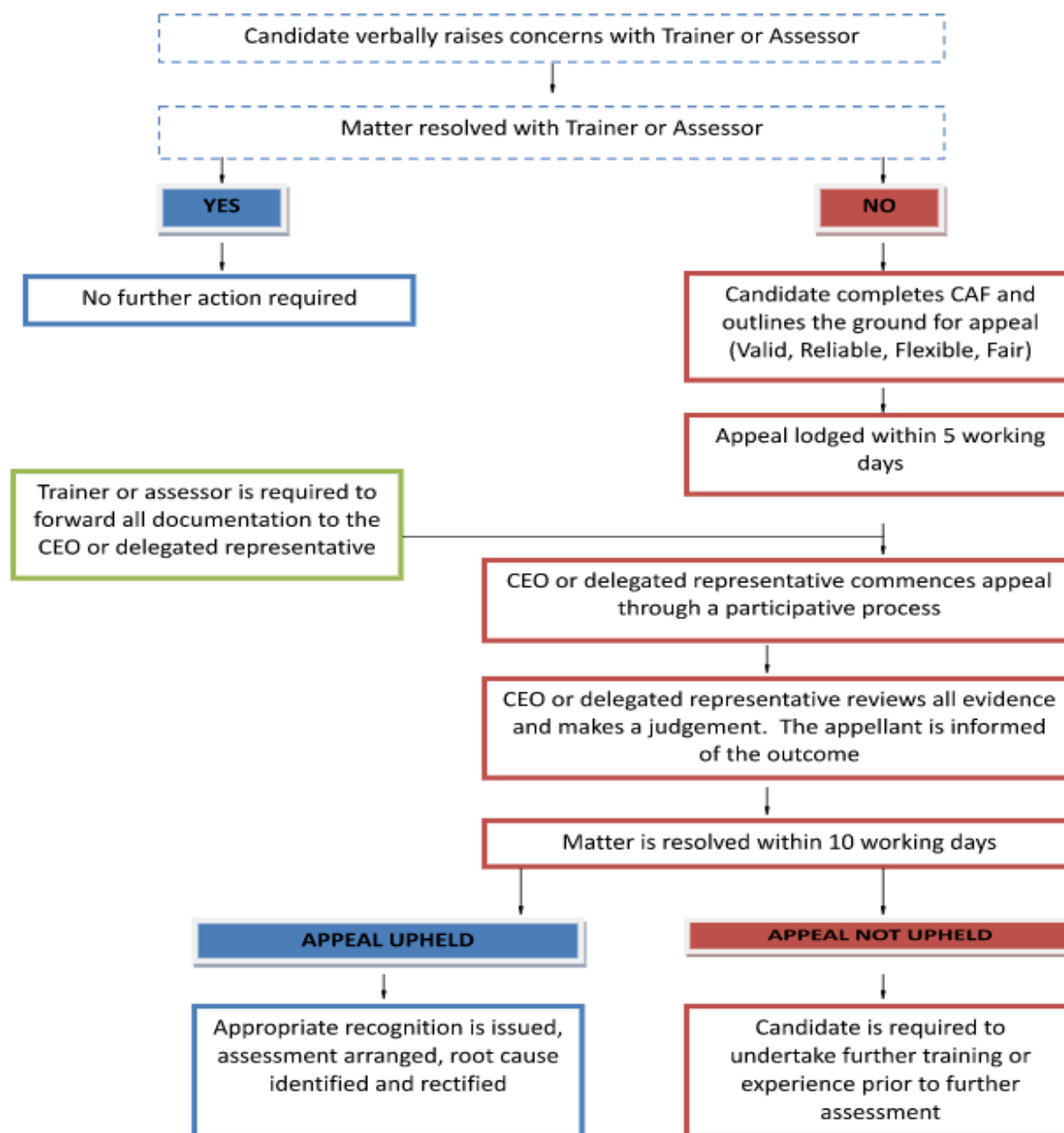
The student has the right to appeal on an assessment result if they believe that the result given was unfair or unjustified.

This includes Appeals arising in the following areas:

- a) Student disagrees with the result given by their Assessor (including Third Party)
- b) Student wishes to have their result reviewed by another Assessor
- c) Student wishes to be reassessed for the same unit
- d) Student wishes to change the unit
- e) Student believes that they were discriminated against by the Assessor

22.1 Assessment Appeals Procedure - General overview

Appeals Process



All students have the right to appeal any assessment decision made by the RTO if they:

- Believe that the assessment is invalid and/or
- Feel that the process was invalid, inappropriate or unfair

Before making an appeal, we ask that you discuss the matter with your Trainer/Assessor in an attempt to reach a decision.

Beyond the general overview

If you are still not happy, you are then entitled to lodge a formal Appeal by completing an “Complaints and Appeals Form” within 7 days of the initial discussion. Once a formal appeal is lodged a new Assessor will be appointed in an attempt to resolve the appeal. Any decision recommended by this party is not binding to either party in the dispute.

If you are still not satisfied another registered training provider in the same curriculum area will be appointed to arbitrate and reassess participants if necessary.

You have the right to a support person to be involved at all times during the appeal process.

Following is the process submitting an Appeal:

1. Student receives a result for an assessment task of which they do not agree with the result
2. Student completed a *Complaints and Appeals Form*
3. The *Complaints and Appeals Form* is submitted to the RTO Manager
4. A written acknowledgement of receipt will be forwarded to the Student confirming receipt of the *Complaints and Appeals Form*
5. The General Manager will consult with the trainer/assessor and student individually
6. The General Manager is to follow the process on the *Complaints and Appeals Form* for the process under “Recommend Action Required for Improvement”
7. An initial meeting should be held within 10 business days
8. The student will be advised of the outcome of this consultation process within 15 business days of the dispute being lodged
9. If it is decided that there is a case for review, a suitably qualified, independent assessor will be employed to conduct another assessment. An assessment date will be negotiated with the student. Following the assessment, the student will be advised of the result within 10 business days
10. If the student is not satisfied with any decisions made in this review process, a Review Board (which may include representatives from another RTO) will be convened to review the case again. An opportunity for Improvement Form may need to be completed in order to identify any improvements on the process that may need to be made
11. All *Complaints and Appeals Forms* received are to be entered onto the Complaints and Appeals Register

All *Complaints and Appeals Forms* are to be reviewed during the monthly Quality and Compliance Meetings. If the RTO determines that the appeals process will take more than 60 calendar days, the RTO manager will notify the student in writing including reasons why more than 60 days is required. The RTO manager will regularly update the student with the process.

23 Fee Protection Policy

Prepaid fees include all fees paid in advance from individual learners and prospective students. These requirements do not apply to employers engaging the RTO to provide training/assessment to its staff.

Fees include **all** fees that the student is required to pay to complete the course, this includes:

- Enrolment/Administration Fees
- Tuition Fees
- Fees for materials, including text books
- Any other fee component that is a mandatory fee to complete the course

The RTO will ensure that all fees are clear and transparent on the course flyer.

23.1 Threshold Prepaid Fee

The RTO requires a minimum deposit, which will not exceed \$1,500 per individual student, prior to course commencement. If the full course fees are below \$1,500, the full fees may be required prior to course commencement. Please refer to the course flyers for an outline of all course fees.

Following course commencement, full fees will be required to be paid by either a payment plan (if remaining fees are over \$1500), or in full (if the remaining fees are below \$1500) for tuition and other services yet to be delivered.

In order to protect students who, prepay course fees in excess of \$1500, the RTO has in place the following policies:

- 1) If the RTO is unable to provide services for prepaid services, the RTO will place the student into an equivalent course such that:
 - a) The new location is suitable to the student
 - b) The student receives the full services for which they have prepaid at no additional cost to the student; or
- 2) Students will be paid a refund of any prepaid fees for services yet to be delivered above the threshold prepaid fee amount.
- 3) The RTO will not collect more than \$1500 prior to course commencement and progress payments will not exceed \$1500 instalments throughout the course.
- 4) If course fees are more than \$1500, progress payments will not exceed \$1500 and the remaining course fees will be evenly distributed across the duration of the course delivery.

24 Insurance

The RTO maintains public liability Insurance throughout its registration with adequate cover suitable for the RTO's size and scope of registration, which is generally set as \$10,000,000.

The CEO is responsible for ensuring that sufficient cover is in place to cover the usual risks associated with the operations of an RTO including coverage for training and assessment activities. Other insurances relevant to the RTO's operations may include:

- Professional indemnity, workers compensation (as required)
- Building and contents (where appropriate)

25 Legislative and Regulatory Requirements

When undertaking work experience, the student acknowledges that they must observe the employers Workplace Health and Safety (WHS) Policies and all workplace practices, as instructed by the employer, including Equal Rights, Equal Opportunity and the Anti-Discrimination Acts. In consideration of all the RTO clients and students it is important that adherence to all legislative acts and regulations are observed while undertaking training.

The student acknowledges that they must observe the RTO's policies and procedures, according to State and Federal Government legislative and regulatory requirements, as set out in the Student Handbook.

25.1 Statutory Education License

Provisions under Part VB of *The Copyright Act 1968* allow all educational institutions to copy and communicate third party material to distribute to students, within the limitations of the Statutory Education licence. [The Copyright Agency Ltd \(CAL\)](https://docs.google.com/document/d/1k7Q37VKE6HrsL5f1X3z-oZNuJTn7YPKvN14aFQLmAO8/edit) administers the Statutory Education licence on behalf of the Attorney General's Department.

Any RTO electing to rely on this licence is legally allowed to introduce a wide variety of material into its training environment, both in hardcopy and digital format, without having to obtain direct permission from the owner. It facilitates compliance and good governance across the industry, while at the same time ensuring the freedom and flexibility of sharing information without infringing copyright legislation.

Without this licence an educational institution is generally not allowed to reproduce any third party material from any source, other than where there is a direct licence/subscription in place, or permission has been granted by the creator of the work.

For further details about the Statutory Education licence and/or how to apply, call CAL's education team on 02 9394 7600 or email educationlicences@copyright.com.au.

25.2 Standards for Registered Training Organisations 2025

The <https://www.legislation.gov.au/F2025L00354/asmade/text> form part of the VET Quality Framework, a system which ensures the integrity of nationally recognised qualifications. These Standards set out the requirements that Transformational Institute are required to meet in order to be an RTO.

RTOs are required to comply with these Standards and with the:

- *National Vocational Education and Training Regulator Act 2011* or equivalent legislation covering VET regulation in a non-referring State as the case requires
- VET Quality Framework

Note – the *National Vocational Education and Training Regulator Act 2011*, or equivalent legislation covering VET regulation in a non-referring State, provides the VET Regulator with the powers necessary to carry out its functions. Nothing in these Standards may be read as limiting or diminishing those powers.

These Standards should be read in conjunction with the:

- Standards for Training Packages
- Standards for VET Accredited Courses
- Standards for VET Regulators

All employees, including contractors, of the Transformational Institute are required to comply with the regulatory requirements of these standards across the RTO's operations and scope of registration. Compliance with the Standards includes ensuring that training products delivered by the RTO meets the requirements of training packages or VET accredited courses, and have integrity for employment and further study and ensure that the RTO operates ethically with due consideration of learners' and enterprises' needs.

Transformational Institute is not under any agreements with any other providers to deliver or assess the training you will undertake.

25.3 National Vocational Education and Training Regulator Act 2011

The <https://www.legislation.gov.au/C2011A00012/latest/text> establishes the regulatory requirements for registration of a RTO's. The objectives of this act are:

- a) to provide for national consistency in the regulation of vocational education and training (**VET**); and
- b) to regulate VET using:
 - i. a standards-based quality framework; and
 - ii. risk assessments, where appropriate; and
- c) to protect and enhance:

- i. quality, flexibility and innovation in VET; and
 - ii. Australia's reputation for VET nationally and internationally; and
- d) to provide a regulatory framework that encourages and promotes a VET system that is appropriate to meet Australia's social and economic needs for a highly educated and skilled population; and
- e) to protect students undertaking, or proposing to undertake, Australian VET by ensuring the provision of quality VET; and
- f) to facilitate access to accurate information relating to the quality of VET.

Note 1: The standards-based quality framework mentioned in paragraph (b) consists of instruments made by the Ministerial Council, the Minister or the National VET Regulator.

Note 2: These objects are subject to the constitutional basis for this Act (see Division 3).

25.4 Australian Qualifications Framework (AQF)

Applicants and RTOs are required to comply with the [Australian Qualifications Framework](#) (AQF), in particular when developing materials or writing Training and Assessment Strategies. The AQF is the quality assured national framework of qualifications in the school, vocational education and training, and higher education sectors in Australia. The AQF Handbook outlines the requirements for setting up Certificates and Testamurs

25.5 Data Provision Requirements 2012 (T)

Data Provision Requirements 2020 (T)

The [Data Provision Requirements 2020](#) outlines the requirements for applicants and registered training organisations (RTOs) to capture and provide data to the regulatory body.

The data required relates to registration and performance information, including [quality indicator data](#) and information derived from the Australian Vocational Education and Training Management of Information Statistical Standard (AVETMISS).

The Australian Vocational Education and Training Management Information Statistical Standard (AVETMISS) for VET providers is a national data standard for VET providers that ensures the consistent and accurate capture of VET information about students, their courses, units of activity, and qualifications completed. It provides the mechanism for national reporting of the VET system.

For a copy of the AVETMIS Standard go to <http://www.ncver.edu.au> and select Statistical Standards – VET Providers.

(Note: AVETMISS is revised from time to time to maintain relevance and appropriateness. The current version can be accessed from the NCVER website (above).

The Data Provision Requirements require relevant applicants and RTOs to show that they have adequate systems to capture and report on this data against the agreed quality indicators.

25.6 Privacy Protection Act 2012 & Privacy Act 1988

The RTO respects the importance of securing any form of personal information which is collected from the student (s) and/or other Stakeholders. The RTO promotes and conducts the following policy in accordance with the privacy Amendment (enhancing Privacy Protection) Act 2012, which amends the Privacy Act 1988.

Australian Privacy Principle 1 – Open and transparent management of personal information

Types of information which will be collected and where it is held

The RTO collects information for training purposes and compliance against NVR standards to ensure quality service is given to its students in an open and transparent way.

The information collected and stored in the RTO's AVETMISS database includes;

- Student Name
- Age, sex

Document Name:	Student Handbook	Created By:	RTO ADM
Version:	G2.2	Reviewed:	May 2025
Created Date:	09/12/2020	Approved By:	Christine Chittenden
Document Location:	https://docs.google.com/document/d/1k7Q37VKE6HrsL5f1X3z-oZNuJTn7YPKvN14aFQlmaO8/edit		
		Review Date:	May 2026

- Contact information
- Record progress
- For more information, please refer to Clause 17.4 on page 90 for Records Management – paper based Policy and Procedure

How information is gathered

This information is collected for statistical purposes by the Government & regulating bodies. How the RTO gathers such information through the AVETMISS data collected on the enrolment form and the Q1 AQTF feedback form.

Australian Privacy Principle 2 – Anonymity and Pseudonymity

Should the student and/or stakeholder choose to remain anonymous or use a pseudonym the individual has the right when it is lawful and practicable to do so.

In the case of enrolling into a nationally recognised qualification, all students must use the identity details on their photo ID which will be verified by the RTO.

Australian Privacy Principle 3 – Collection of solicited personal information

Personal information other than sensitive information

The RTO will only collect personal information that is reasonably necessary for one or more of their functions or activities.

Sensitive information

Sensitive information in which the RTO may collect and/or solicit, would be for lawful means as authorised by or under an Australian Law or a court/tribunal order. Should sensitive information be related to students' health and safety, the RTO may collect this information with the consent of the individual or authorised by or under Australian Law.

Australian Privacy Principle 4 – Dealing with unsolicited personal information

Should the RTO receive personal information although not solicited such information, they will determine as soon as practicable and lawful to do so, destroy the information or ensure the information is de-identified. The RTO will also, within a reasonable period after receiving the information, determine whether or not it could have been collected under APP 3.

Australian Privacy Principle 5 – Notification of the collection of personal information

At or before the time, or if that is not practicable as soon as practicable after, the RTO collects personal information about an individual, such steps will be taken to inform the individual:

- The identity of the RTO and contact details
- If the RTO collects or has collected personal details from someone other than the individual
- If the collection of personal information is required or authorised by or under an Australian law or a court/tribunal order.
- The purpose for which the RTO has collected the information
- The consequences (if any) for the individual if all or some of the personal information is not collected by the RTO
- Whom the RTO discloses the personal information too
- How the individual may access the personal information and seek correction of such information

- Please refer to Clause 16.6 on page 72 for access to records Policies & Procedures
- How the individual may complain due to any form of breach
- Please refer to Clause 16.1 on page 74 for the Complaints and Appeals Policies & Procedures

Australian Privacy Principle 6 – Use or disclosure of personal information

The RTO will ensure and promote to its staff that disclosure of personal information for another purpose such as direct marketing, public relations and relationship building is not prohibited unless the individual has consented to the use of disclosing information.

Where State or Commonwealth funding supports training we are obliged to submit personal and progress details for research, statistical analysis, program evaluation, post completion survey and internal management purposes.

Australian Privacy Principle 7 – Direct marketing

The RTO will not use or disclose personal information for the purpose of direct marketing as outlined in APP 6 unless consent is made by the individual.

This includes sharing your personal details with another organisation unless it is a government department.

Australian Privacy Principle 8 – Cross border disclosure of personal information

The RTO will only transfer personal information to an individual or someone overseas if;

- The receipt of the information is subject of law
- The RTO believes that the disclosure of the information is reasonably necessary for one or more enforcement activities.

Australian Privacy Principle 9 – Adoption, use or disclosure of government related identifiers

The RTO must not adopt a government related identifier of an individual as its own identifier of the individual unless required or authorised by or under an Australian law or a court/tribunal order; if:

- The identifier is prescribed by the regulations
- The organisation is prescribed by the regulations
- The adoption, use or disclosure occurs in the circumstances prescribed by the regulations

In this case of Traineeships and Apprenticeships, students will be issued with a Training Contract Identification Number (TCID), which will be used for identification with the relevant government department.

In the case of the Unique Student Identifier (USI) all students will be required to produce this number prior to enrolment.

Australian Privacy Principle 10 – Quality of personal information

All personal information collected by the RTO must be accurate, up to date, complete and relevant. Refer to Clause 16.6 on page 72 for the Policies & Procedures.

Australian Privacy Principle 11 – Security of personal information

The RTO must ensure that personal information is protected from misuse, interference and loss from unauthorised access, modification or disclosure. To ensure this, all data is collected and stored on the student management system with limited access to authorised personnel only.

Australian Privacy Principle 12 – Access to personal information

All students have the right to gain access to information on request that falls within the definition of personal information. Should the information be withheld from the individual, the RTO should provide a reason why access will not be made available within lawful reasons.

Australian Privacy Principle 13 - Correction of personal information.

Requires organizations to take reasonable steps to correct personal information they hold if it is inaccurate, out-of-date, incomplete, irrelevant, or misleading. This includes situations where the organization is satisfied of the information's inaccuracy or when an individual requests a correction. Upon request, the organization must also communicate corrections to third parties to whom the information was previously disclosed.

25.7 Media Consent and Usage Policy

The Institute reserves the right to all media images taken during a student's studies, including photographs, videos, and DVD images.

However, prior to photographing or filming a student, or using a student's name and images for work or promotional purposes, the Institute will obtain informed consent from the student with a signed consent form. This consent process includes providing the student with a clear explanation of how the photographs or videos will be used. The Institute ensures that students are fully informed and agree to the usage of their images, videos, or names before any media is captured or utilised.

25.8 Workplace Health and Safety Act 2011

The RTO is committed to providing and maintaining a safe and healthy environment for the benefit of all clients, visitors and employees.

The RTO monitors and maintains the appropriate Workplace Health and Safety levels and obligations under the Federal and State rules and regulations of the NSW Work Health and Safety Act 2011.

If students have any concerns or notice a condition or practice that seems unsafe, it is important that it is brought to the attention of the RTO management this generally occurs through the Trainer / Assessor.

According to Division 2, Section 19 - Primary duty of care:

- a) A person conducting a business or undertaking must ensure, so far as is reasonably practicable, the health and safety of:
 - workers engaged, or caused to be engaged by the person, and
 - workers whose activities in carrying out work are influenced or directed by the person, while the workers are at work in the business or undertaking.
- b) A person conducting a business or undertaking must ensure, so far as is reasonably practicable, that the health and safety of other persons is not put at risk from work carried out as part of the conduct of the business or undertaking.
- c) Without limiting subsections (1) and (2), a person conducting a business or undertaking must ensure, so far as is reasonably practicable:
 - the provision and maintenance of a work environment without risks to health and safety, and
 - the provision and maintenance of safe plant and structures, and
 - the provision and maintenance of safe systems of work, and
 - the safe use, handling, and storage of plant, structures and substances, and

- the provision of adequate facilities for the welfare at work of workers in carrying out work for the business or undertaking, including ensuring access to those facilities, and
- the provision of any information, training, instruction or supervision that is necessary to protect all persons from risks to their health and safety arising from work carried out as part of the conduct of the business or undertaking, and
- that the health of workers and the conditions at the workplace are monitored for the purpose of preventing illness or injury of workers arising from the conduct of the business or undertaking.

According to Division 4 of the Act:

28 Duties of workers

While at work, a worker must:

- a) take reasonable care for his or her own health and safety, and
- b) take reasonable care that his or her acts or omissions do not adversely affect the health and safety of other persons, and
- c) comply, so far as the worker is reasonably able, with any reasonable instruction that is given by the person conducting the business or undertaking to allow the person to comply with this Act, and
- d) co-operate with any reasonable policy or procedure of the person conducting the business or undertaking relating to health or safety at the workplace that has been notified to workers.

29 Duties of other persons at the workplace

A person at a workplace (whether or not the person has another duty under this Part) must:

- a) take reasonable care for his or her own health and safety, and
- b) take reasonable care that his or her acts or omissions do not adversely affect the health and safety of other persons, and
- c) comply, so far as the person is reasonably able, with any reasonable instruction that is given by the person conducting the business or undertaking to allow the person conducting the business or undertaking to comply with this Act.

WHS Incident Report

The WHS Incident Report is utilised to record injuries and incidents that occur within the RTO/workplace and must be completed whenever an injury or incident is identified. The form collects data on the incident, personal details of the person who was injured and further action to be undertaken.

In the incident of a student injury, it is the responsibility of the Trainer/Assessor to complete the form with all the relevant details. In the incident of a staff member being injured, it is the responsibility of Administration Staff to complete the form with all the relevant details.

All staff and students are required to be safety aware and report all incidents, including an identified hazard or an injury that has occurred on the RTO premises or whilst on work placement. These should be either reported to your trainer or to the administration office at the RTO.

The following procedure should be followed when reporting an incident after the event and when the area/person has been declared safe:

1. Obtain a copy of the “WHS Incident Report” form from either a trainer or the administration office at the RTO.
2. Complete the form to the best of your abilities, by ensuring all fields are completed on pages 1, and 2, as indicated.
3. Submit completed copy to reception at the RTO office.
4. Reception are required to forward the form to the WHS Officer

Document Name: Student Handbook

Version: G2.2

Created Date: 09/12/2020

Document Location: <https://docs.google.com/document/d/1k7Q37VKE6HrsL5f1X3z-oZNuJTn7YPKvN14aFQlmaO8/edit>

Created By: RTO ADM

Approved By: Christine Chittenden

Review Date: May 2026

Reviewed: May 2025

5. Your supervisor will identify and implement any controls and forward to the WHS Coordinator.
6. WHS Coordinator to complete pages 3 and 4 of the report “Action Required/Taken”, including:
 - a. How was the risk managed?
 - b. Whether the relevant safety authority and/or the insurance company was contacted
7. WHS Coordinator to identify whether a required WHS Risk Assessment is required.
8. WHS Officer to log the “WHS Incident Report” into the “WHS Register” and file.
9. All incidents to be discussed at the next Quality and Compliance Meeting.
10. In the case of minor incidents an “Opportunity for Improvement” form should be completed.

Hazard Identification

Everyone is responsible for identifying and reporting hazards, which includes students, sub-contractors and employees of the RTO. If you identify a hazard, please report it to either your RTO Manager or the administration office. You will be required to complete either a *WHS Injury Report Form* or a *Hazard Identification Report Form*.

It is important all staff report any injury immediately, by completing a *WHS Injury Report Form*, which is located in the *Trainers Folder* or in the *Administration Office*. If any staff have any concerns or notice a condition or practice that seems unsafe, it is important it is brought to the attention of the RTO Manager or an Administration staff member of the RTO.

25.9 Emergency Procedures

An emergency situation may be described as an incident that has the potential to cause loss of life or serious injury to personnel, or major damage to equipment or property. An emergency situation develops suddenly and unexpectedly and requires immediate action to bring under control.

Fire Emergency

You need to make yourself aware of Emergency Procedures, the location of fire extinguishers or hose reels and the location of the Evacuation Meeting Point.

In the event of an emergency, if practical, save human life or prevent the emergency from escalating eg. remove people from the area, fight the fire with appropriate firefighting equipment or turn off services.

Fire Emergency

If the emergency situation involves a fire the following points should be remembered if attempting to fight the fire:

1. When using a fire extinguisher do not aim the nozzle at the centre of the fire. Work from near edge and with a sweeping motion drive the fire to the far edge.
2. Do not stand up wind or uphill of a fire.
3. If there is any chance of chemicals or explosives in the fire, evacuate the area.
4. If there is any doubt about it being an electrical fire, treat it as an electrical fire.
5. If unable to immediately control the situation it must be reported by available means such as, telephone, etc.
6. You must notify your name, type of emergency, location of the emergency and assistance required.
7. Never take any unnecessary risks in attempting to control the situation. Evacuate first.

You need to make yourself aware of Emergency Procedures, the location of fire extinguishers or hose reels and the location of the Evacuation Meeting Point.

Evacuation Procedure (T&S)

In the event of an emergency situation eg: a fire, bomb threat, gas leak etc... Each employee/contractor/student is required to follow the Evacuation Procedures issued by the Evacuation Team.

1. Upon arriving at the Evacuation Meeting Point please await further instructions from the Fire Warden or the Emergency Services.
2. Please do not leave the Evacuation Meeting Point until you are instructed to do so, as a roll call will be initiated to ensure that there are no employees/contractors or students left behind in the building.

25.10 Anti-Discrimination Act 1977

In the event of an emergency, if practical, save human life or prevent the emergency from escalating eg. remove people from the area, fight the fire with appropriate firefighting equipment or turn off services.

Fire Emergency

If the emergency situation involves a fire the following points should be remembered if attempting to fight the fire:

1. When using a fire extinguisher do not aim the nozzle at the centre of the fire. Work from near edge and with a sweeping motion drive the fire to the far edge.
2. Do not stand up wind or uphill of a fire.
3. If there is any chance of chemicals or explosives in the fire, evacuate the area.
4. If there is any doubt about it being an electrical fire, treat it as an electrical fire.
5. If unable to immediately control the situation it must be reported by available means such as, telephone, etc.
6. You must notify your name, type of emergency, location of the emergency and assistance required.
7. Never take any unnecessary risks in attempting to control the situation. Evacuate first.

You need to make yourself aware of Emergency Procedures, the location of fire extinguishers or hose reels and the location of the Evacuation Meeting Point.

25.11 Sexual Harassment Act 1984

All representatives of the RTO are required to note and agree to comply fully with the regulations and legislation preventing Sexual Harassment and ensure that all training participants are made aware of and comply with such regulations and legislation requirements.

Sexual Harassment includes but is not limited to:

1. Making unsolicited and unwelcome written, verbal, physical or visual contact with sexual overtones (for example: jokes, slurs, assault, touch or posters)
2. Continuing to express sexual interest after being informed that the interest is unwelcome
3. Masking reprisals, threats of reprisal or implied threats of reprisals following a negative response. (for example, suggesting a poor performance report will be given)
4. Engaging in implicit or explicit coercive sexual behaviour which is used to control, influence or affect the career, salary or environment of another
5. Offering favours or benefits such as promotions, favourable reviews, favourable assigned tasks, etc in return for sexual favours

The RTO strives for an environment free of sexual harassment. These policies against harassment apply to both the training and work environments for participants, clients, staff and contractors.

Anyone found to be in violation of this policy will be subject to appropriate disciplinary action, which includes warnings, reprimand, suspension, dismissal or cancellation of contract.

25.12 Harassment Act 1997

Harassment, victimisation, bullying or any such conduct that has the purpose or effect of interfering with an individual's work performance or creating an intimidating, hostile, or an offensive learning environment, will not be tolerated. This includes harassment, victimisation, bullying because of sex, race, national origin, religion, disability, sexual preference or age.

Harassment is unlawful under Commonwealth and State legislation and all harassment, bullying and victimisation are contrary to the duty of care to provide a safe environment for work and learning.

Harassment, victimisation and bullying can take many forms. It can be overt or subtle, direct or indirect.

Examples of Harassment may include:

- Unwelcome physical contact
- Repeated unwelcome invitations
- Insulting or threatening language or gestures
- Continual unjustified comments about a client's work or work capacity
- Jokes and comments about someone's ethnicity, colour, race
- Pictures, posters, graffiti, electronic images, which are offensive, obscene or objectionable.

Examples of victimisation may include:

- Unfavourable treatment like aggression
- Refusing to provide information to someone
- Ignoring a person
- Mocking customs or cultures
- Lower assessment of client work

Examples of bullying may include:

- A person who uses strength or power to coerce others by fear
- Behaviour that intimidates, degrades or humiliates a person
- Aggression, verbal abuse and behaviour which is intended to punish
- Personality clashes and constant 'put-downs'
- Persistent, unreasonable criticism of client work performance
- Client violence both physical and threatened against teachers

Staff and students should be aware that differing social and cultural standards may mean behaviour that is acceptable to some may be perceived as offensive by others. Such conduct, when experienced or observed, should be reported to your trainer or the Chief Executive Officer. All complaints will be promptly investigated. Disciplinary measures may be enforced depending on the risk level of the complaint received. TI has an Aboriginal Cultural Officer who is available upon request, students are requested to attend the Reception area and schedule an appointment, or alternatively call the office and arrange an appointment.

25.13 Anti-Bullying

Violence, harassment and bullying are human rights issues that profoundly affect the lives of many people in Australia.

We all have a right to feel safe and respected. We all have a right to live our lives free from violence. Violence, harassment and bullying can violate these rights. They can also impact on other rights, such as the right to education and the right to health. Violence, harassment and bullying affect well-being and quality of life.

Victims can experience significant social isolation and feel unsafe. Bullying can lead to emotional and physical harm, loss of self-esteem, feelings of shame and anxiety, and concentration and learning difficulties. Tragically, violence, harassment and bullying can lead to suicide in extreme cases.

These are not issues that concern only children and young people. Violence, harassment and bullying can occur in a number of different environments, including in workplaces, care facilities and in the community, and can affect people of all ages and backgrounds.

Bullying can also take place in cyberspace: over the internet and on mobile phones. New technologies enable the spread of information, ideas and images to large numbers of people very quickly. There are many challenges in protecting people from violence, harassment and bullying in cyberspace.

We all have a responsibility to create a safe environment by standing up against violence, harassment and bullying. If bystanders take safe and appropriate action to stop bullying, we can all be a part of the solution. In the event of a situation that is considered by clients to be in violation of the RTO harassment, victimisation and bullying policy, report the situation to management.

Refer to your state regulatory body for more information.

Non-Academic misconduct and discipline Policy & Procedure

Transformational Institute reserves the right to review the enrolment status of any student whose conduct or performance is not of an acceptable standard or if there is a breach of any policy stated within this handbook. Penalties for breaches of rules or unsuitable or disruptive behaviour will be imposed depending on the nature and severity of the breach. A warning will be given for minor breaches and students will be suspended from training for more serious breaches. Students may be requested to leave the course where major or repeated breaches have occurred and where all discipline avenues have been exhausted. Please refer to the Code of Practice for the rules and regulations that apply to all students and staff.

Non-academic misconduct includes but is not limited to the following:

- Behaviour in the manner that tarnishes Transformational Institutes reputation and name
- Stealing from Transformational Institute, other students' or staff property
- Damage to Transformational Institute and/or other students' property
- Engage in unlawful activities on Transformational Institute premises, including any premises used by Transformational Institute for events or training.
- Misuse of Transformational Institute equipment.
- Threaten, harass, abuse, discriminate or vilify Transformational Institute staff members or students in person or on any social media sites.
- Disrupt classes and/or fail to follow the trainer and/or other Transformational Institute personnel's reasonable directives
- Falsify medical certificate
- Vandalism
- Provide false documents e.g. qualifications, statements of attainment, evidence references etc.
- Non-payment of fees by the due date
- Non-attendance without substantial reason and supporting documentation
- Not abiding by the Code of Practice
- Non-adherence to any policy or behavioural standard outlined in the handbook
- Failing to adhere to the WHS requirements.
- To protect our student's confidentiality students are not allowed to take a photo or video of another student's person, assessment or class work.

25.14 AFP National Police Check

A number of industries require students and staff to complete a National Police Check before the students can commence Work Placement, these include Aged Care and Children's Services industries. In order to meet the requirements of these industries, the RTO may be required to undertake Police Record Checks of staff and students. Please refer to the following website for details: <https://www.afp.gov.au/our-services/national-police-checks>

The following requirements **must** be met when submitting an AFP National Police Check (NPC) application. **Failure to meet the required standards will result in the application not being processed.**

1. All other names by which you are known or have previously been known (such as your maiden name), must be provided in full, including given names. Check that your date of birth is correctly entered.
2. **Full payment must accompany the application.** You can pay using either Visa, Mastercard or American Express. Alternatively, for a manually completed application you may pay by bank cheque, which must be in Australian dollars, or money order obtainable from Australia Post. **Personal and Company Cheques will not be accepted. Please do NOT send cash. Applications with incorrect amounts will not be processed.**
3. Copies of identification documents totalling 100 points must be provided. Details of the points attributed to identification documents are provided as part of the application process. **DO NOT SEND ORIGINAL IDENTIFICATION DOCUMENTS WITH YOUR APPLICATION.**
4. Ensure all the necessary details are submitted, including signed consent and copies of identification documents. Please note parental consent will be required if the applicant is under 18 years of age.
5. For manually completed applications:
 - You must submit the form no more than three months after signing it.
 - Mark the appropriate checkboxes with a cross (X).
 - Ensure you secure all paperwork, forms, payment, and identification to your application.
 - Ensure all the necessary details have been completed and the form is **signed and dated**.
 - The application form must be completed using **block letters** (ie capital/uppercase)
 - Bank cheques and money orders are to be in Australian dollars (\$AUD) and are to be made payable to the **Australian Federal Police**.
 - If paying by bank cheque it must be from an Australian bank or financial institution affiliated with an Australian bank. **Personal and Company cheques will not be accepted.**
 - The correct payment must be included with **all** applications.
 - Do not include self-addressed/stamped envelopes for return of certificates. These will not be used or returned.

Applications can be completed online through the following portal:

<https://afpnationalpolicechecks.converga.com.au/>

25.15 Copyright Act 1968

The copyright Act 1968 is an Act relating to copyright and the protection of certain performances, and for other purposes. For more information regarding the Copyright Act 1968 visit:

<https://www.legislation.gov.au/Series/C1968A00063>

Students and staff need to be aware that photocopying of textbooks and assessment tools may be in breach of the Copyright Act, please adhere to the copyright requirements listed within the relevant documents you wish to copy.

25.16 Working with Children Check

Who needs a Working with Children Check?

A Working with Children Check is a prerequisite for anyone in child-related work in NSW. All training and administration staff who may come into contact with students under the age of 18 years, this includes the delivery of training and assessment, are required to complete a Working with Children Check before they are able to work with students under the age of 18.

Document Name:	Student Handbook	Created By:	RTO ADM
Version:	G2.2	Reviewed:	May 2025
Created Date:	09/12/2020	Approved By:	Christine Chittenden
Document Location:	https://docs.google.com/document/d/1k7Q37VKE6HrsL5f1X3z-oZNuJTn7YYPKvN14aFQlmaO8/edit		
		Review Date:	May 2026

As a Registered Training Organisation, we have adopted child-safe policies and practices to help keep students under the age of 18 safe. For more information about creating child-safe organisations or to register for a workshop, go to Office of the Children Guardian <https://ocg.nsw.gov.au/>

A Working with Children Check includes national police check and review of findings of misconduct involving children. The result is either a clearance or a bar.

If the outcome is a clearance, the Check is valid for five years and may be used for any child-related work (paid or voluntary) in NSW. Cleared applicants will be subject to ongoing monitoring and relevant new records could lead to a bar and the clearance being revoked.

Before engaging a new, paid, child-related worker, an employer must ensure the worker has a clearance to work with children, or a completed Check application in progress. Existing workers and volunteers should be verified online as they are phased in to the new Check.

The only way to accurately determine a person's clearance status is by verifying their Working with Children Check online; **paper evidence of a clearance should not be accepted.**

Child related work is defined as face-to-face contact with children in a child-related se

25.17 Child Protection (Working with Children) Regulation 2013

In accordance with the legislation for Child Protection under Child Related Work-Education, Trainers and staff need to be aware of their responsibilities as a Trainer to protect students under the age of 18, this includes staff who:

1. Work in schools or other educational institutions (other than universities) is child-related work.
2. Work providing private coaching or tuition to children is child-related work.

Please refer to the Child Safe Policy below

The following links provides access to State and Territory government bodies where working with children check applications can be made.

- **Western Australia**
<https://www.wa.gov.au/organisation/department-of-communities/working-children-check>
- **New South Wales**
<https://www.service.nsw.gov.au/transaction/apply-for-a-working-with-children-check>
- **Victoria**
<https://www.vic.gov.au/working-with-children-check>
- **South Australia**
<https://www.sa.gov.au/topics/rights-and-law/rights-and-responsibilities/screening-checks/screening-wwcc>
- **Northern Territory**
<https://nt.gov.au/emergency/child-safety/apply-for-a-working-with-children-clearance>
- **ACT**
<https://www.accesscanberra.act.gov.au/business-and-work/working-with-vulnerable-people/apply-for-or-renew-a-wwv-p-registration>
- **Tasmania**
<https://www.service.tas.gov.au/services/education-and-skills/working-with-vulnerable-people-including-children/apply-for-registration-to-work-with-vulnerable-people>

ASSESSMENT COVER SHEET

This Assessment Cover Sheet is required to be attached to your assessment task prior to submission for marking

STUDENT DETAILS			
Family Name:			
Given Name:			
SUBJECT DETAILS			
Qualification:			
Unit Code and Name:			
Trainers' Name:			
ASSIGNMENT DETAILS			
Due Date:		Assessment No: (If applicable)	
Date Submitted:			
CHECKLIST			
<input type="checkbox"/> I have kept a copy of my assignment before submitting <input type="checkbox"/> I have completed and signed this page <input type="checkbox"/> I have answered all questions in the assignment <input type="checkbox"/> I have attached any relevant evidence/documentation, as required for the assessment			
DECLARATION			
<p>I have been advised of the assessment requirements and have been made aware of my rights and responsibilities as an assessment candidate.</p> <p>I declare that, to the best of my knowledge and belief, this assignment is my own work, all sources have been properly acknowledged, and the assignment contains no plagiarism. This assignment or any part thereof has not previously been submitted for assessment at this or any other RTO.</p>			
Student's signature:			Date:

Assessment Feedback

RESULT	Competent	Not Yet Competent	RPL	RCC
NYC – New assessment date scheduled or FIR – Further information Required			Date:	
Trainers/Assessors signature:			Date:	
STUDENT COMMENTS				
<input type="checkbox"/> I have received my assessment result and am satisfied with the feedback given on this assessment				
Student's signature:			Date:	

Student and Staff Support Services Contact Listing

Name of Organisation	Website	Phone #	Email	Client Needs Addressed
Australia.gov.au	https://my.gov.au/en/services/education/help-when-studying	Website	Refer to Website	Covers a broad range of assistive support including LLN
Adult Migrant English Program	https://immi.homeaffairs.gov.au/settling-in-australia/amep/about-the-program	1300 566 046	Refer to Website	Assisting clients who have migrated to Australia and require assistance with LLN
Beyond Blue	www.beyondblue.org.au	1300 224 636	https://online.beyondblue.org.au/WebModules/Email/InitialInformation.aspx	For clients who are experiencing anxiety and/or depression
Black Dog Institute	www.blackdoginstitute.org.au	(02) 9382 2991	http://www.blackdoginstitute.org.au/aboutus/contactus.cfm	Depression and Bipolar Disorder Information Australia
Lifeline Australia	www.lifeline.org.au	13 11 14	Refer to Website	Clients who may be in a crisis or at risk of suicide or know of someone at risk of suicide
National Training Complaints Hotline	https://www.dewr.gov.au/national-training-complaints-hotline	1800 227 337	skilling@dewr.gov.au	For enquiries about Apprentices, Trainees, Registered Training Organisations, VET courses, VET student loans, VET student debt enquiries, and complaints.
The Reading Writing Hotline	http://readingwritinghotline.edu.au/	1300 655 506	rwhotline@det.nsw.edu.au	If a client is having difficulty with reading, writing and numeracy
Workplace Bullying Helpline	https://www.safework.nsw.gov.au/search?query=bullying	02 4926 2129	Refer to Website	For clients who have been affected by bullying
Physical disability Australia	http://www.pda.org.au/	1800732674	Available on website	For clients who require assistance with their physical disability
Disability Advocacy Network Aust.	http://www.dana.org.au/	(02) 6175 1300	Available on website	For clients who may require assistance with their disability
National Disability Service	http://www.nds.org.au/	(02) 6283 3200	nds@nds.org.au	For clients who may require assistance with their disability
Vision Australia	http://www.visionaustralia.org/	1300 84 74 66	info@visionaustralia.org	For clients who require assistance due to vision impairment
Department of health/Mental health	https://www.health.nsw.gov.au/mentalhealth/Pages/mental-health-line.aspx	(02) 6289 1555	Available on website	Support for students who are affected by health or mental health issues

Document Name: Student Handbook

Version: G2.2

Created Date: 09/12/2020

Document Location: <https://docs.google.com/document/d/1k7Q37VKE6HrsL5f1X3z-oZNuJTn7YPKvN14aFQlMAO8/edit>

Created By: RTO ADM

Approved By: Christine Chittenden

Review Date: May 2026

Reviewed: May 2025

Complaints	<u>ASQA</u>	13 38 73	Available on Website	RTO student assist with complaints
Student Wellbeing	<u>Therapeutic Wellbeing</u>	024969754 4		Student counselling available

26 General Information

Dress Code Policy & Procedure

Students should remember that personal presentation is very important to their future success.

Students are required to dress clean and appropriate clothing. Students are also expected to maintain a high standard of personal hygiene and to avoid strong perfumes or other odours which can be uncomfortable or offensive to others.

Examples of appropriate and inappropriate clothing are listed below;

Appropriate

Runners, sandals

Appropriate skirts

Appropriate dresses (length & neckline)

Casual dress

Suits

Appearance must be clean, neat and tidy at all times

Inappropriate

Thongs or bare feet (WHS issue)

Torn and tattered clothing of any kind

Midriff tops

Singlet shirts or sleeveless shirts

Obscene or offensive clothing

Short shorts

We believe that this policy works well in developing a business-like attitude, and impressing future employers. We have found that the dress code that we have established is appropriate for the comfort of all staff and students.

Drugs and Alcohol Policy Statement

Transformational Institute is committed to protecting the safety, health and well-being of all employees, students and other individuals. We recognise that alcohol abuse and drug use pose a significant threat to our goals. We have established a drug-free program that balances our respect for individuals with the need to maintain an alcohol and drug-free environment. Our drug-free policy means that alcohol is not to be served or consumed at any campus under any circumstances.

Guests or other individuals found to be in the possession of or under the influence of alcohol or unauthorised substances on Transformational Institute premises will be immediately asked to leave the premises. This infringement would constitute a breach of the conditions of enrolment and penalties may apply.

Concessions

All normal concessions apply to full-time students, including rail and bus transport concessional passes (OPAL Cards). May be sourced from Centrelink or other Government agencies.

Personal Property

Transformational Institute cannot be held responsible for student's' personal property. It is up to each student to look after their personal property and students should not leave valuables unattended.

Please note that there is no secure storage available for student's personal belongings.

Mobile Phones

Mobile phones must be switched to silent when you are in class. Important personal calls may be taken, however you must excuse yourself from the classroom and limit any interruptions to yours and others' study. Please be considerate of others at all times.

Change of Personal Details

Students are required to notify Transformational Institute in writing, of any change of address or contact phone number, including mobile phone numbers and email addresses. Any information given by a student is considered private and confidential.

Smoking

Transformational Institute is a smoke free zone. Smoking is not permitted inside any Transformational Institute branch or surrounds. Students wishing to smoke must do so outside and away from Transformational Institute premises (10 meters). Staff will provide information as to where the designated smoking area is. Students are not to stand in front of the building and smoke, as it portrays an unprofessional image of the Transformational Institute.

Work Placement

Transformation Institute will assist wherever possible to assist with the placement of students into host employers to complete their mandatory work placement hours but does not guarantee these placements. The student is best advised to source suitable employers to enable them to complete their mandatory hours.

Mandatory Workplace Hours

Dependant on the Unit/Course of enrolment students will be made aware at the Pre-enrolment stage of any mandatory workplace placement and totality of the hours required to be fulfilled to successfully complete their Unit/Course of Study, including the workplace requirements for logging of those hours into the Site Visitation Log, and further explained in the Student's Work Placement Logbook, which will be issued to all students completing studies within those courses.

This document also serves as a "Notification of Assessment", providing the student with invaluable information in relation to the Training and Assessing processes that they will undergo.

Consumer Guarantee

Transformation Institute guarantees that training provided by the organisation will be ongoing to all students up to and including completion of studies once the training and assessing processes have begun. Transformational Institute is an approved training provider that has obligations to deliver quality training, adhere to Smart and Skilled guidelines and policies, and establish consumer protection processes for our students.

Entry Requirements

There are no entry requirements or prerequisite studies required as part of enrolment. Transformational Institute operates under a "rolling start " system, where students can enter at the beginning of any unit of competency aligned to their studies.

Resource requirements for government funded students enrolled in disability and aged care

Students are provided with all training resources required for their individual units of study (either singularly or as part of a complete course), at no cost to the students. Students are to bring their own writing materials (pens and writing pads for note taking), it is recommended that a folder in which to keep their notes and resources in a neat and tidy manner is also available, the folder is not mandatory, merely a suggestion.

These courses have three components and **all** must be completed.

1. THEORY - attending class and successfully completing the workbooks for each unit.

2. ON THE JOB – Placement hours relevant to your qualification of practical activity registered in your logbook whilst you performed services whilst on shift hours. These hours must be signed off by your shift supervisor and
3. FINAL ASSESSMENT – b. successful completion of the required final assessment including practical observations by the trainer assessor. This will be organised once you notify Transformational Institute that you have completed the required work placement hours. The procedure is -
 1. Be competent in all units,
 2. Complete and submit your logged work placement hours and tasks
 3. Organise an appointment for the final assessment and practical observations
 Once these are all completed successfully, we can issue your qualification within 28 days.

Disability Observations

When you have completed your units and submitted your signed off relevant to your qualification of work placement we will organise a time for the trainer assessor to come to you in your workplace and complete the required observation to fully complete your qualification.

Forms **must** be completed before the observations are organised and you must provide the contact details of your supervisor before we can move forward with the observations.

Payment Notice

Once workplace arrangements have been agreed to on the date and time of the final, students are advised that due to administrative costs and pre-payment arrangements for the Assessor to attend, whether you attend or not, we will charge a flat fee of \$100 if you do not provide 48 hours notice that you cannot attend.

You may also need to wait for several weeks until the Assessor has time to re attend your final assessment

Closing Note:

If you have any questions about Transformational Institute or our procedures and policies, please feel free to ask any of our friendly staff, by calling 02 4969 7544.

Furthermore, your suggestions are always welcome. We look forward to starting you on your journey of learning and hope to launch you into your future career. You will find a suggestion box in the reception area.

This student handbook provides you with the information you will need throughout your study with Transformational Institute. On occasions, amendments may be required to sections of this handbook to ensure it is kept current with policies, regulatory requirements, legislation and other areas associated with your study, should this occur, you will be advised and a copy of any amendments issued to you.

At the completion, and during your studies, you will be requested to complete a Feedback Form so that we can ensure you are entirely satisfied with the services we are offering; we ask that you be completely honest in your comments so that we can address your concerns.

We wish you all the best during your journey with us, good luck and congratulations on choosing to study to further your career and transform your life.



I have been informed about, and understand, the terms as stated in the Trainers and Assessors Handbook. (Please return a signed copy of this section only, and return to the CEO)

Name:

Signature:

Date: / /

Signature of Manager:

Date: / /

Annexure A

COMPLAINTS ,GRIEVANCE AND APPEALS FORM

Complainant Name		COMPLAINT AGAINST <input type="checkbox"/> Trainer <input type="checkbox"/> Student <input type="checkbox"/> RTO Staff Member <input type="checkbox"/> Employer <input type="checkbox"/> Resources <input type="checkbox"/> Assessment Tools <input type="checkbox"/> Transformational Institute
Date Submitted		
Who is complaining (Please tick)	<input type="checkbox"/> Student <input type="checkbox"/> Trainer/Assessor <input type="checkbox"/> RTO Staff Member <input type="checkbox"/> Employer <input type="checkbox"/> Other	
Form submitted to		
Other party/s involved		
C&A Register No		

Appeal's must be lodged within 7 days of the initial result being determined.

Refer to the Complaints & Appeals Policy in the Student Handbook for procedure.

Risk Rating (refer to Risk Matrix for evaluation)				
Extreme	High	Medium	Low	No Risk Identified
<input type="checkbox"/>	<input type="checkbox"/>	<input type="checkbox"/>	<input type="checkbox"/>	<input type="checkbox"/>

Details of Complaint/Grievance/Appeal

Assessment Appeals: Have you discussed this matter with your trainer in an attempt to reach a decision?
Yes/No (circle)

A complainant is given the opportunity to complete a Complaints Report Form, with this form, if there is not enough room to document your statements in reference to the complaint.

Complaints Form attached Yes/No (circle)

[illegible]

Signed By:

Date:

☐ Form submitted to RTO Manager or CEO Date: _____

Recommended Action Required For Improvement

Written Acknowledgement (within 5 business days)

☐ Written acknowledgement has been given to the complainant

Initial Meeting: (within 10 business days)

☐ Complaint raised

☐ Initial meeting held to discuss with all parties involved in the complaint, in order to find a solution agreeable to all parties.

☐ Solution found and remedied (Please continue to Appeal Outcomes section)

Further investigation required: (within 60 calendar days)

☐ Referral to RTO Manager or nominated person.

☐ Referred to a third party/panel

☐ Referral to other services (i.e. counseling services or LLN)

☐ Referred to National Training Complaints Hotline

☐ Referral to government body (i.e. police, hospital)

☐ Referral to funding body (i.e. DET, VTG)

*The RTO is responsible for acting upon the subject of any complaint/appeal found to be substantiated. A student will be advised of the outcome of this consultation process within **15 business days** of the dispute being lodged.*

Appeal Outcomes

Document Name: Student Handbook

Version: G2.2

Created Date: 09/12/2020

Document Location: <https://docs.google.com/document/d/1k7Q37VKE6HrsL5f1X3z-oZNuJTn7YPKvN14aFQLmAO8/edit>

Reviewed: May 2025

Created By: RTO ADM

Approved By: Christine Chittenden

Review Date: May 2026

Action/Response Taken By:	Date:

Feedback From Complainant

- ☐ Satisfied with outcome
☐ Dissatisfied with outcome – Further action required
☐ Matter was dealt with within a reasonable timeframe Yes/No

Other comment:

Complainant Signature:	Date:

Action/Monitoring	Date	Action taken by
<input type="checkbox"/> Opportunity for Improvement implemented		
<input type="checkbox"/> Actioned at Quality & Compliance Meeting		
<input type="checkbox"/> Policies and procedures updated and implemented		
<input type="checkbox"/> Filed into Complaints Register		
<input type="checkbox"/> Cross-referenced with Database		

Please submit this form, along with all accompanying and relevant documentation including any third party reports to the General Manager or CEO

The CEO or their nominated person is to update the Complaints and Appeals Register